

WAAS CH <b>53504</b> W31A	APP CRS <b>311°</b>	Rwy Idg TDZE Apt Elev	<b>9200</b> <b>354</b> <b>366</b>
---------------------------------	------------------------	-----------------------------	---

# RNAV (GPS) RWY 31

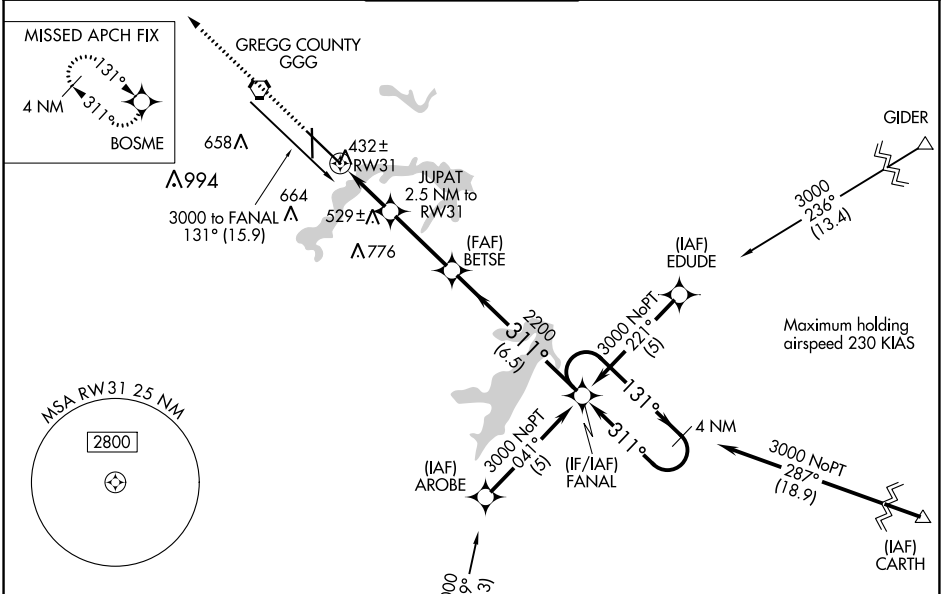
EAST TEXAS RGNL (GGG)

RNP APCH - GPS

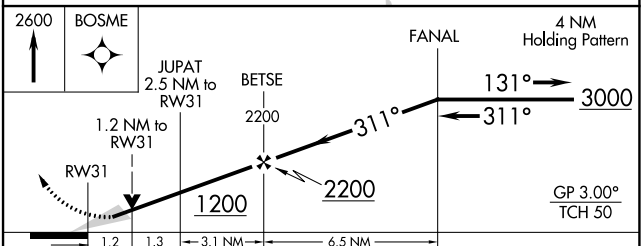
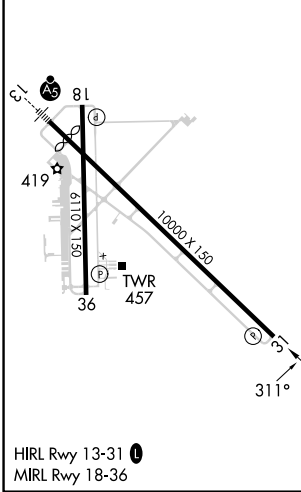
**Baro-VNAV and VDP NA when using Gilmer altimeter setting. For uncompensated Baro-VNAV systems, LNAV/VNAV NA below -15°C or above 54°C. When local altimeter setting not received, use Gilmer altimeter setting and increase all DA 59 feet, all MDA 60 feet. Increase LPV visibility all Cats 1/8 SM and Circling visibility Cats C/D/E 1/4 SM.**

**MISSED APPROACH:**  
Climb to 2600 direct BOSME and hold.

ATIS <b>119.65</b>	LONGVIEW APP CON* <b>124.675 257.975</b>	EASTEX TOWER* <b>119.2 (CTAF) 377.05</b>	GND CON <b>121.6</b>	UNICOM <b>122.95</b>
-----------------------	---	---	-------------------------	-------------------------



ELEV 366	<b>D</b>	TDZE 354
----------	----------	----------



CATEGORY	A	B	C	D	E
LPV DA		604-3/4		250 (300-3/4)	
LNAV/VNAV DA		682-1/4		328 (400-1/4)	
LNAV MDA	800-1	446 (500-1)	800-1 3/8 446 (500-1 3/8)	800-1 1/2	446 (500-1 1/2)
CIRCLING	860-1	494 (500-1)	980-1 3/4 614 (700-1 3/4)	1080-2 1/4 714 (800-2 1/4)	1080-2 1/2 714 (800-2 1/2)

SC-2, 08 AUG 2024 to 05 SEP 2024

SC-2, 08 AUG 2024 to 05 SEP 2024