

| | | | |
|--|------------------------|-----------------------------|---|
| WAAS CH 99426 W18A | APP CRS 176° | Rwy Idg TDZE Apt Elev | 6109 356 366 |
|--|------------------------|-----------------------------|---|

RNAV (GPS) RWY 18

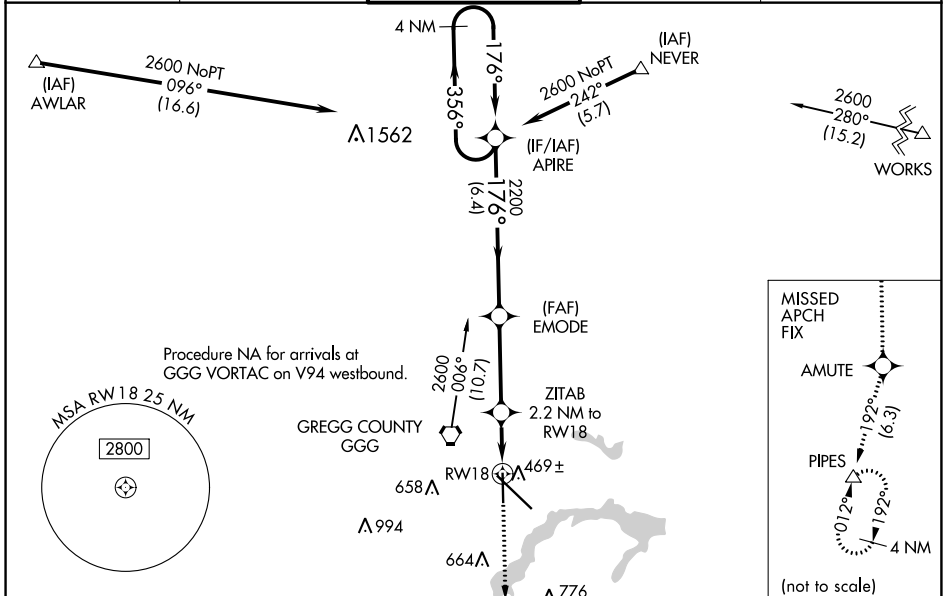
EAST TEXAS RGNL (GGG)

RNP APCH - GPS

⚠ Baro-VNAV and VDP NA when using Gilmer altimeter setting. For uncompensated Baro-VNAV systems, LNAV/VNAV NA below -15°C or above 54°C. Rwy 18 helicopter visibility reduction below ¼ SM NA. When local altimeter setting not received, use Gilmer altimeter setting and increase LPV DA to 689 feet, LNAV/VNAV DA to 711 feet and all MDA 60 feet; increase LPV visibility all Cats ½ SM and LNAV and Circling visibility Cats C/D ¼ SM.

MISSED APPROACH:
Climb to 2400 direct AMUTE and on track 192° to PIPES and hold.

| | | | | |
|-----------------------|---|--|-------------------------|-------------------------|
| ATIS 119.65 | LONGVIEW APP CON* 124.675 257.975 | EASTEX TOWER* 119.2 (CTAF) 0377.05 | GND CON 121.6 | UNICOM 122.95 |
|-----------------------|---|--|-------------------------|-------------------------|

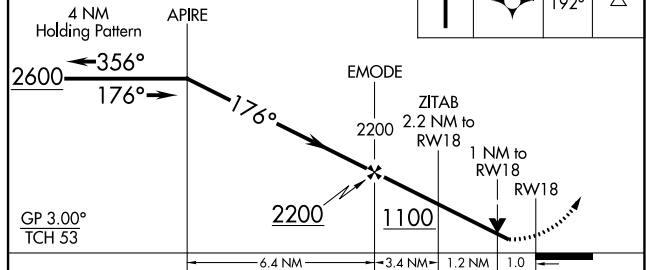
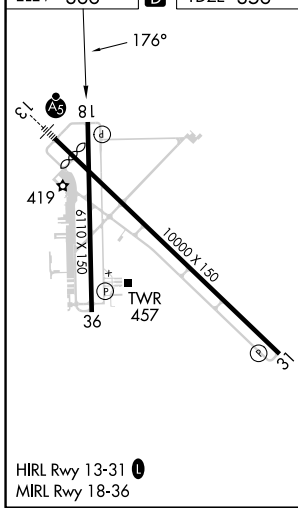


SC-2, 08 AUG 2024 to 05 SEP 2024

SC-2, 08 AUG 2024 to 05 SEP 2024

| | | |
|----------|----------|----------|
| ELEV 366 | D | TDZE 356 |
|----------|----------|----------|

VGSI and RNAV glidepath not coincident (VGSI Angle 3.00/TCH 59).
 2400 AMUTE tr 192° PIPES



| CATEGORY | A | B | C | D |
|--------------|-------|-------------|------------------------------|-------------------------------|
| LPV DA | | 630-7/8 | 274 (300-7/8) | |
| LNAV/VNAV DA | | 652-1 | 296 (300-1) | |
| LNAV MDA | | 720-1 | 364 (400-1) | |
| CIRCLING | 860-1 | 494 (500-1) | 980-1 3/4 614 (700-1 3/4) | 1080-2 1/4 714 (800-2 1/4) |