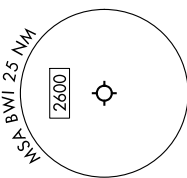
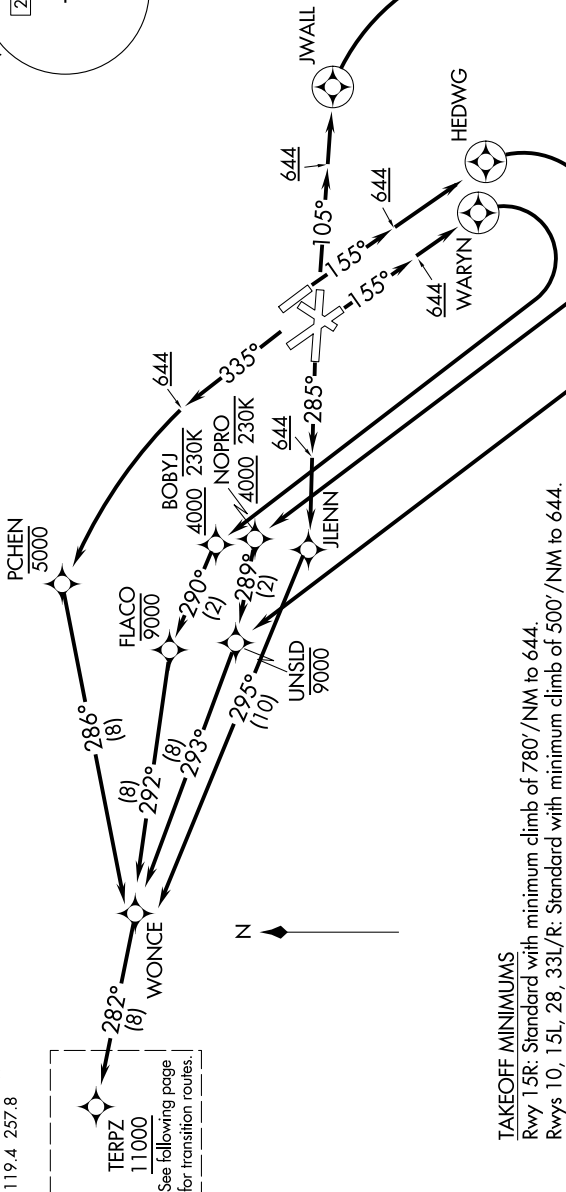


**TOP ALTITUDE:
17000**

RNAV 1 - DME/DME/IRU or GPS.
RADAR required.



NE-3, 05 SEP 2024 to 03 OCT 2024



POTOMAC DEP CON
128.7 307.9
D-ATIS
115.1 127.8
CLNC DEL
118.05
CPDIC
GND CON
121.9
BALTIMORE TOWER
119.4 257.8

TERPZ 11000
See following page for transition routes.

TAKEOFF MINIMUMS
Rwy 15R: Standard with minimum climb of 780'/NM to 644.
Rwys 10, 15L, 28, 33L/R: Standard with minimum climb of 500'/NM to 644.

NOTE: Jet aircraft only.

(CONTINUED ON FOLLOWING PAGE)

NOTE: Chart not to scale.

NE-3, 05 SEP 2024 to 03 OCT 2024