

WAAS CH 82207 W33A	APP CRS 335°	Rwy Idg TDZE 143 Apt Elev 143	8301 143 143
--	------------------------	---	---

RNAV (GPS) Y RWY 33L

BALTIMORE/WASHINGTON INTL THURGOOD MARSHALL (BWI)

RNP APCH-GPS.

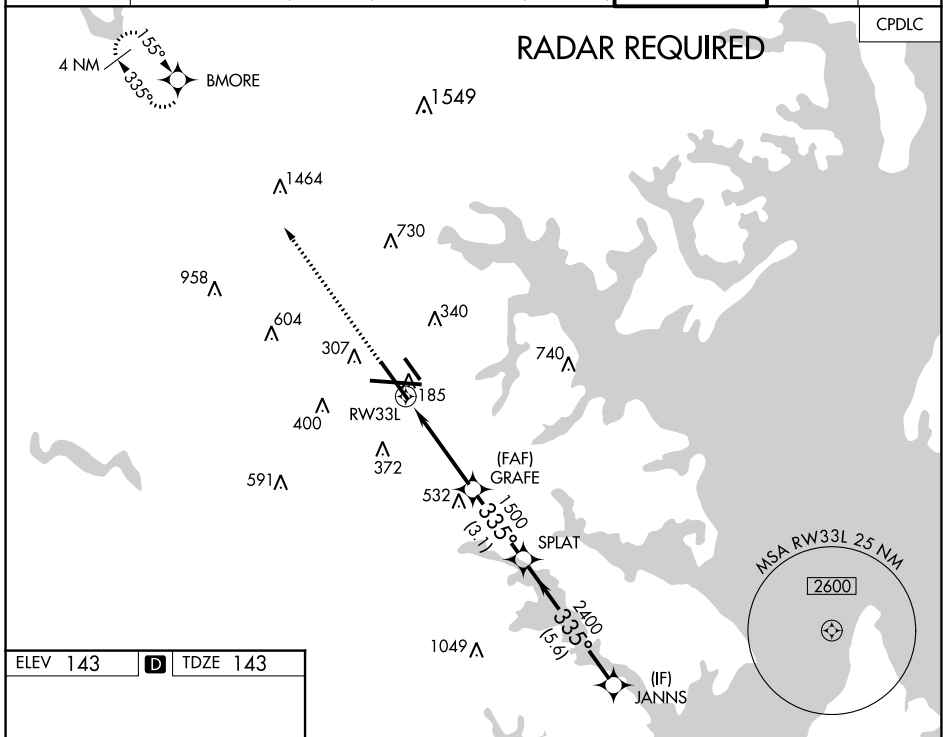
V For uncompensated Baro-VNAV systems, LNAV/VNAV NA below -12°C
A or above 54°C.



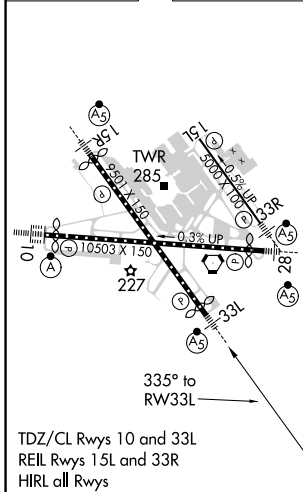
MISSED APPROACH: Climb to 3000
direct BMORE and hold.

D-ATIS 115.1 127.8	119.0 282.275 124.55 317.425	POTOMAC APP CON (020°-100°) 119.7 290.475 (131°-180°) (101°-130°) 128.7 307.9 (181°-019°)	BALTIMORE TOWER 119.4 257.8	GND CON 121.9	CLNC DEL 118.05
------------------------------	---	---	--	--------------------------------	----------------------------------

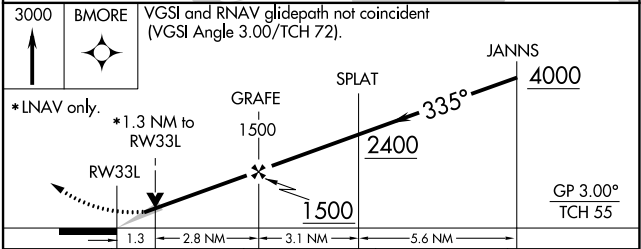
CPDLC



ELEV 143	D	TDZE 143
-----------------	----------	-----------------



TDZ/CL Rws 10 and 33L
REIL Rws 15L and 33R
HIRL all Rws



CATEGORY	A	B	C	D
LPV DA		343/18	200 (200-½)	
LNAV/VNAV DA		432/24	289 (300-½)	
LNAV MDA	600/24	457 (500-½)	600/50	457 (500-1)
C CIRCLING	640-1 497 (500-1)	660-1 517 (600-1)	700-1½ 557 (600-1½)	880-2¼ 737 (800-2¼)

RNAV (GPS) Y RWY 33L

NE-3, 08 AUG 2024 to 05 SEP 2024

NE-3, 08 AUG 2024 to 05 SEP 2024