

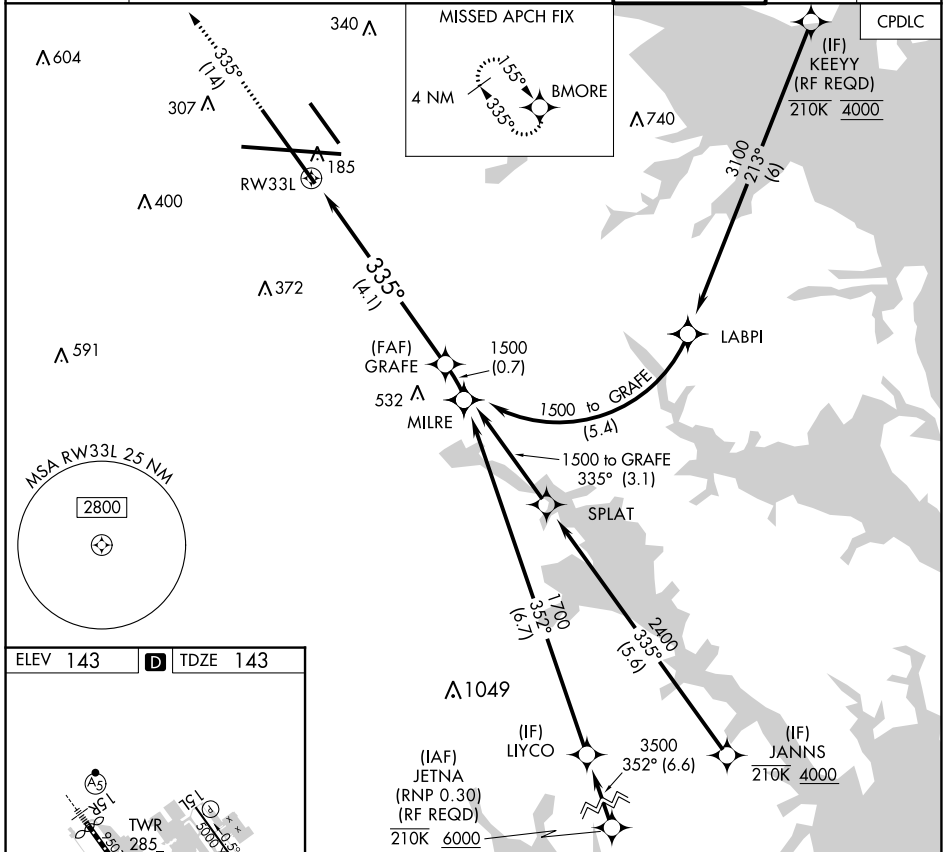
RNAV (RNP) Z RWY 33L

BALTIMORE/WASHINGTON INTL THURGOOD MARSHALL (BWI)

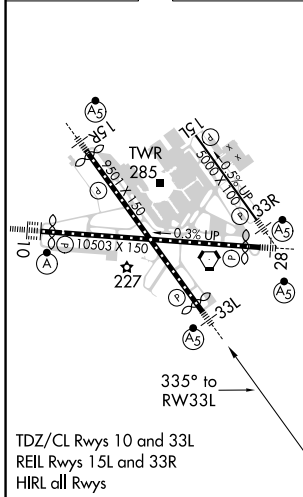
APP CRS 335°	Rwy Idg TDZE Apt Elev	8301 143 143
------------------------	-----------------------------	---

RNP AR APCH-GPS. ▼ For uncompensated Baro-VNAV systems, procedure NA below -12°C or above 54°C. For inop ALS, increase RNP 0.30 all Cats visibility to RVR 6000.	MALSR 	MISSED APPROACH: Climb to 3000 on track 335° to BMORE and hold.
---	-----------	---

D-ATIS 115.1 127.8	POTOMAC APP CON (020°-100°) 119.7 290.475 (131°-180°) (101°-130°) 128.7 307.9 (181°-019°)	BALTIMORE TOWER 119.4 257.8	GND CON 121.9	CLNC DEL 118.05
------------------------------	---	---------------------------------------	-------------------------	---------------------------



ELEV 143	D TDZE 143
----------	-------------------



TDZ/CL Rwy 10 and 33L
REIL Rwy 15L and 33R
HIRL all Rwy

3000 tr 335°	BMORE 	See planview for multiple IF locations. VGSI and RNAV glidepath not coincident (VGSI Angle 3.00/TCH 72).	GRAFE 1500
RW33L		335°	1500
		4.1 NM	GP 3.00° TCH 55
CATEGORY	A	B	C
RNP 0.30 DA	496/35 353 (400-5%)		
AUTHORIZATION REQUIRED			

RNAV (RNP) Z RWY 33L

NE-3, 11 JUL 2024 to 08 AUG 2024

NE-3, 11 JUL 2024 to 08 AUG 2024