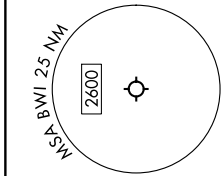


(LINSE1 .LINSE) 24193

# LINSE ONE DEPARTURE (RNAV)

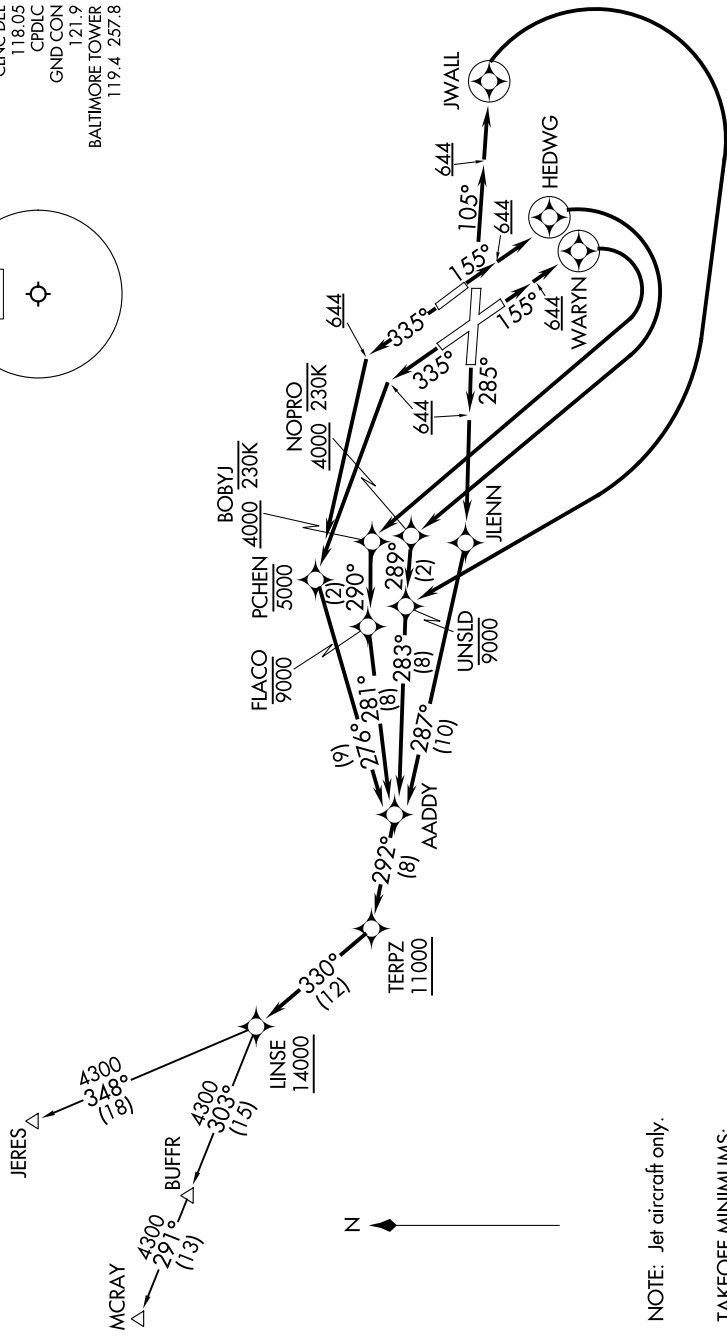
BALTIMORE/  
WASHINGTON INTL THURGOOD MARSHALL (BWI)  
BALTIMORE, MARYLAND  
AL-804 (FAA)

POTOMAC DEP CON  
128.7 307.9  
D-ATIS  
115.1 127.8  
CLNC DEL  
118.05  
CPDIC  
GND CON  
121.9  
BALTIMORE TOWER  
119.4 257.8



RNAV 1 - DME/DME/IRU or GPS.  
RADAR required.

**TOP ALTITUDE:**  
**16000**



NOTE: Jet aircraft only.

TAKEOFF MINIMUMS:  
Rwy 15R: Standard with minimum climb of 780'/NM to 644.  
Rwys 10, 15L, 28, 33L/R: Standard with minimum climb of 500'/NM to 644.

(CONTINUED ON FOLLOWING PAGE)

NOTE: Chart not to scale.

NE-3, 11 JUL 2024 to 08 AUG 2024

NE-3, 11 JUL 2024 to 08 AUG 2024

LINSE ONE DEPARTURE (RNAV)  
(LINSE1 .LINSE) 11 JUL 24

BALTIMORE/  
WASHINGTON INTL THURGOOD MARSHALL (BWI)  
BALTIMORE, MARYLAND