

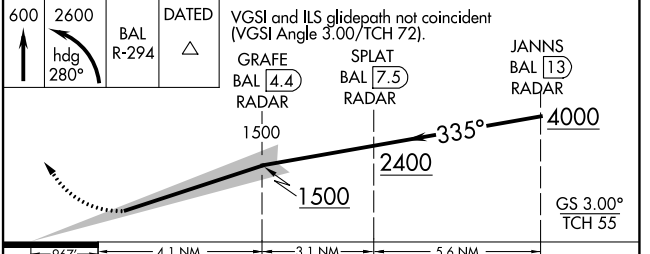
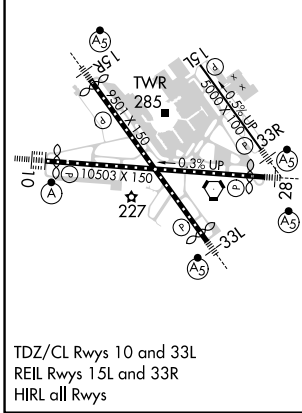
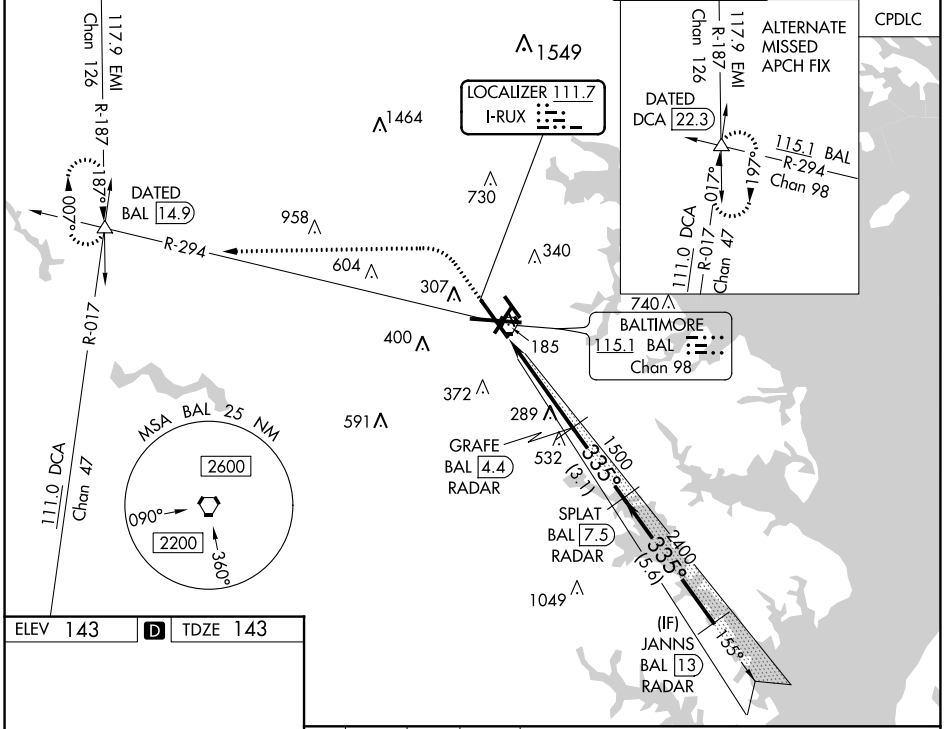
LOC I-RUX 111.7	APP CRS 335°	Rwy ldg TDZE Apt Elev	8301 143 143
---------------------------	------------------------	-----------------------------	-----------------------------------------

ILS RWY 33L (SA CAT I & II)

BALTIMORE/WASHINGTON INTL THURGOOD MARSHALL (BWI)

RADAR required for procedure entry.		MALSR	MISSED APPROACH: Climb to 600 then climbing left turn to 2600 on heading 280° and BAL R-294 to DATED INT/BAL 14.9 DME and hold.	
<p>⚠ Simultaneous approach authorized with ILS or LOC Rwy 33R. DME from BAL VORTAC. SA CAT I: Requires specific OPSPEC, MSPEC, or LOA approval and use of HUD to DH. SA CAT II: Reduced lighting: Requires specific OPSPEC, MSPEC, or LOA approval and use of autoland or HUD to touchdown.</p>				

D-ATIS 115.1 127.8	POTOMAC APP CON (020°-100°) 119.0 282.275	(101°-130°) 119.7 290.475	(131°-180°) 124.55 317.425	(181°-019°) 128.7 307.9	BALTIMORE TOWER 119.4 257.8	GND CON 121.9	CLNC DEL 118.05
------------------------------	--------------------------------------------------------	-------------------------------------	--------------------------------------	-----------------------------------	---------------------------------------	-------------------------	---------------------------



CATEGORY	A	B	C	
S-ILS 33L	SA CAT I RA 186/14 150 DA 293			
S-ILS 33L	SA CAT II RA 132/12 100 DA 243			

SA CATEGORY I & II ILS - SPECIAL AIRCREW & AIRCRAFT CERTIFICATION REQUIRED

NE-3, 11 JUL 2024 to 08 AUG 2024

NE-3, 11 JUL 2024 to 08 AUG 2024