

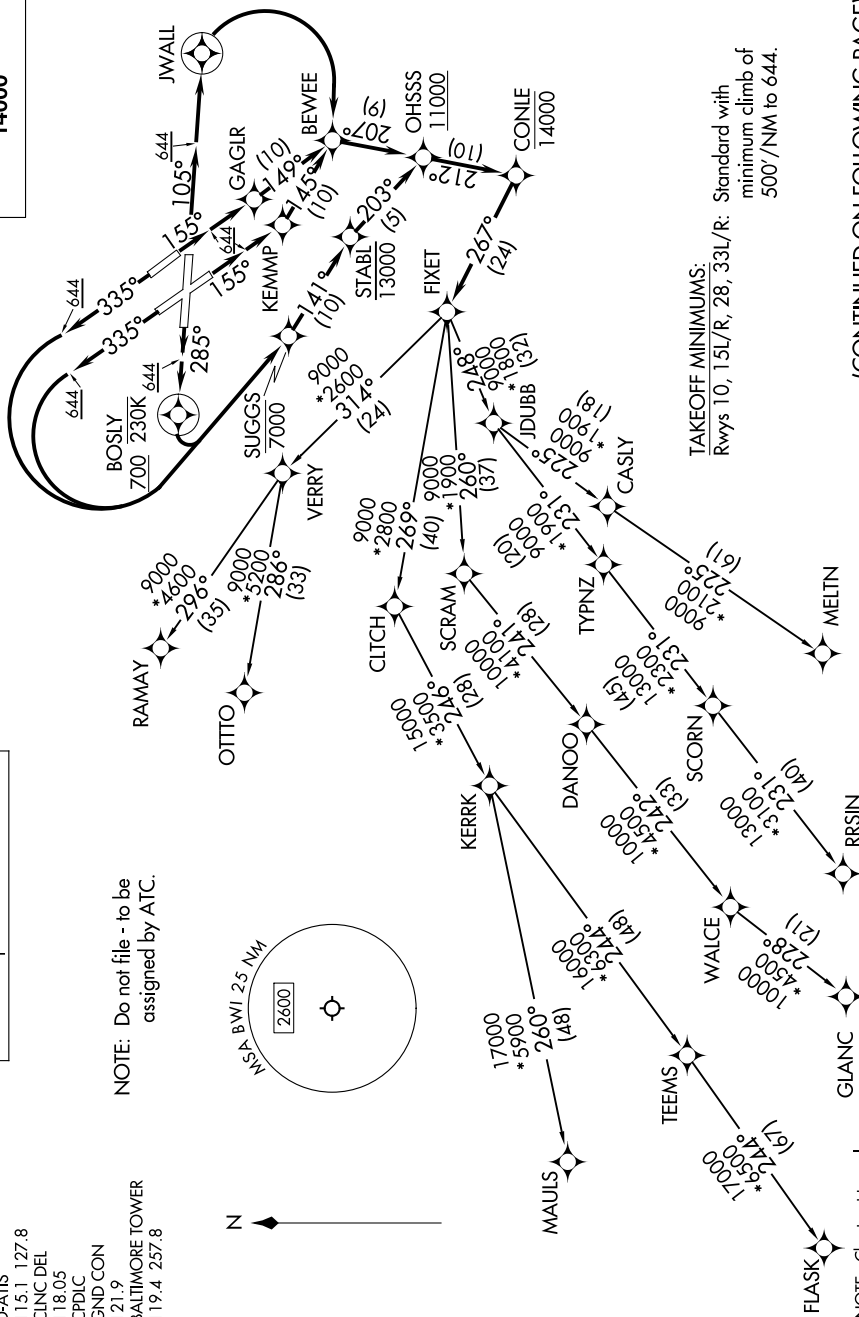
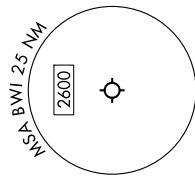
# FIXET FOUR DEPARTURE (RNAV)

**TOP ALTITUDE:  
14000**

RNAV 1-DME/DME/IRU or GPS.  
RADAR required.

POTOMAC DEP CON  
124.55 317.425  
D-ATIS  
115.1 127.8  
CLNC DEL  
118.05  
CPDIC  
GND CON  
121.9  
BALTIMORE TOWER  
119.4 257.8

NOTE: Do not file - to be  
assigned by ATC.



TAKEOFF MINIMUMS:  
Rwys 10, 15L/R, 28, 33L/R: Standard with  
minimum climb of  
500'/NM to 644.

(CONTINUED ON FOLLOWING PAGE)

NOTE: Chart not to scale.