

DUKPN ONE DEPARTURE (RNAV)

**TOP ALTITUDE:
14000**

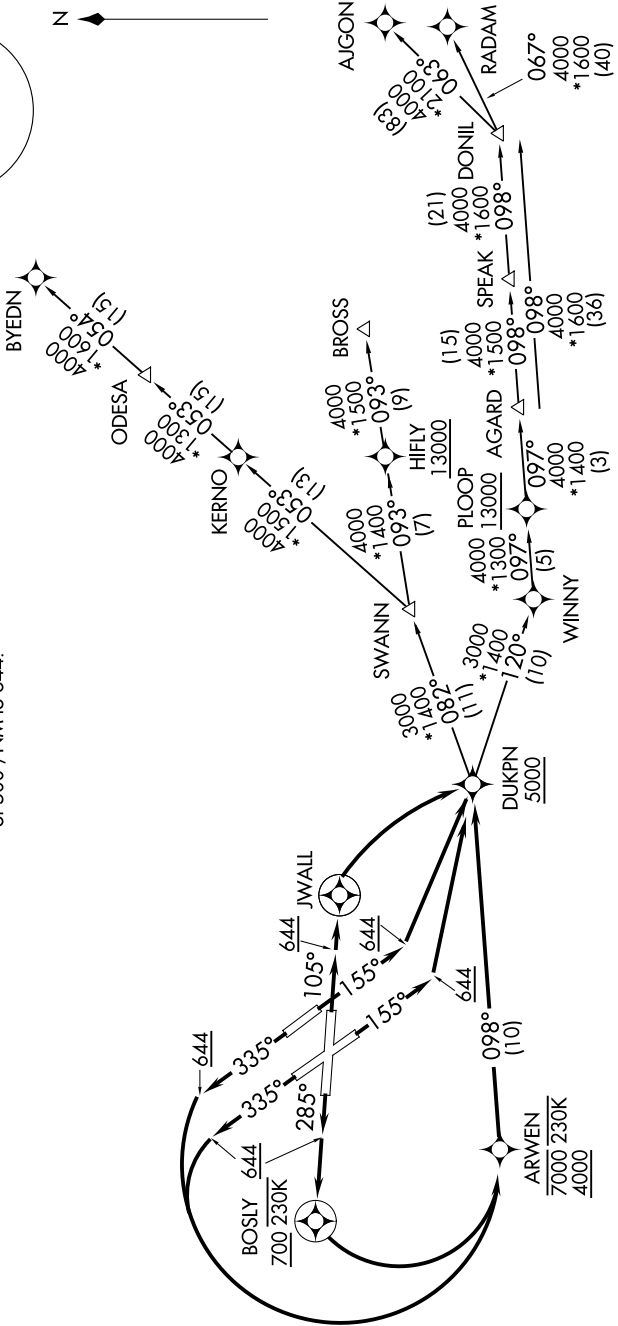
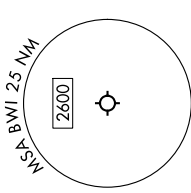
RNAV 1 - DME/DME/IRU or GPS.
RADAR required for non-GPS equipped aircraft.

POTOMAC DEP CON
124.55 317.425
D-ATIS
115.1 127.8
CLNC DEL
118.05
CPDLC
GND CON
121.9
BALTIMORE TOWER
119.4 257.8

NOTE: Jet aircraft only.

TAKEOFF MINIMUMS:

Rwys 10, 15L/R, 28, 33L/R: Standard with minimum climb of 500'/NM to 644.



NOTE: Chart not to scale.

(CONTINUED ON FOLLOWING PAGE)