

WAAS CH <b>69401</b> <b>W17A</b>	APP CRS <b>175°</b>	Rwy Idg <b>6002</b> TDZE <b>541</b> Apt Elev <b>548</b>
--	------------------------	---

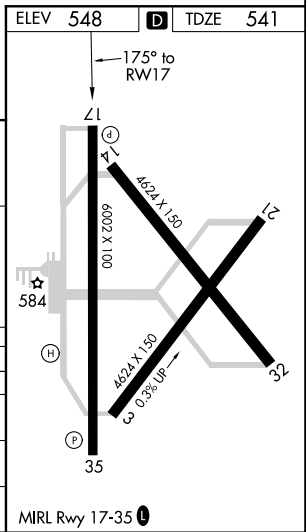
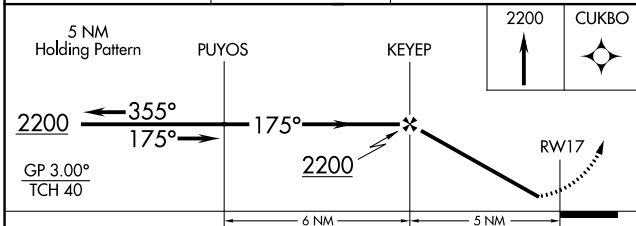
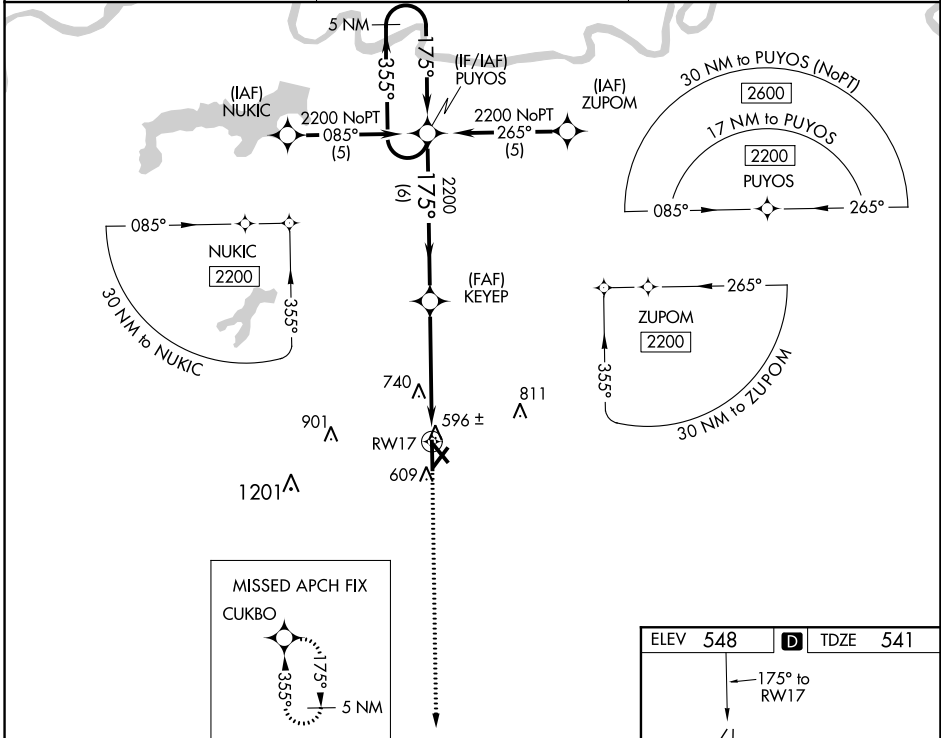
# RNAV (GPS) RWY 17

COX FLD (PRX)

**⚠** DME/DME RNP-0.3 NA. Visibility reduction by helicopters NA. When local altimeter setting not received, use Sulphur Springs altimeter setting and increase LPV DA to 868 feet, LNAV/VNAV DA to 923 feet, and all MDAs 80 feet; increase Circling Cats C/D visibility ¼ SM. For uncompensated Baro-VNAV systems, LNAV/VNAV NA below -16°C (4°F) or above 47°C (118°F). Baro-VNAV NA when using Sulphur Springs altimeter setting.

**MISSED APPROACH:**  
Climb to 2200 direct CUKBO and hold.

AWOS-3PT <b>119.675</b>	FORT WORTH CENTER <b>124.875</b>	UNICOM <b>122.975 (CTAF)</b>
----------------------------	-------------------------------------	---------------------------------



CATEGORY	A	B	C	D
LPV DA		791-1	250 (300-1)	
LNAV/ VNAV DA		846-1	305 (300-1)	
LNAV MDA	1040-1	499 (500-1)	1040-1¼ 499 (500-1¼)	1040-1½ 499 (500-1½)
CIRCLING	1040-1 492 (500-1)	1060-1 512 (600-1)	1100-1½ 552 (600-1½)	1220-2¼ 672 (700-2¼)

SC-2, 19 MAY 2022 to 16 JUN 2022

SC-2, 19 MAY 2022 to 16 JUN 2022