

APP CRS	Rwy Idg	7000
342°	TDZE	4252
	Apt Elev	4252

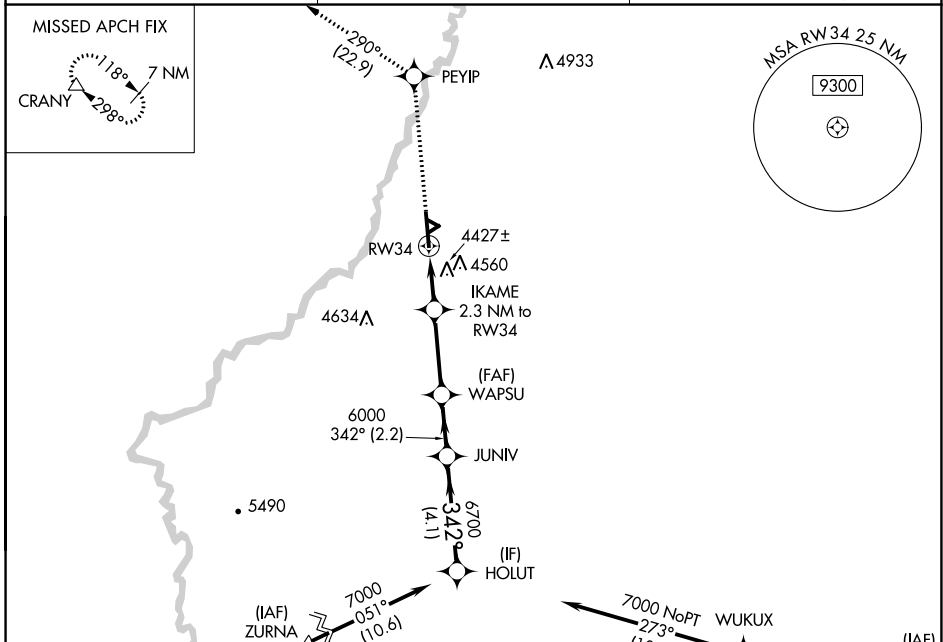
RNAV (GPS) RWY 34

WORLAND MUNI (WRL)

⚠ When local altimeter setting not received, use Greybull altimeter setting: increase all MDAs 140 feet; and LNAV all Cats, and Circling Cat C/D visibilities ½ SM. DME/DME RNP-0.3 NA. Helicopter visibility reduction below ¾ SM NA.

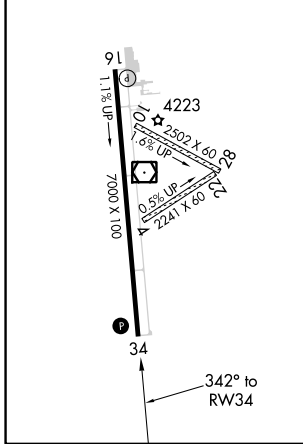
⚠ MISSED APPROACH: Climb to 8500 direct PEYIP and on track 290° to CRANY and hold.

ASOS 135.475	SALT LAKE CENTER 133.25 285.6	UNICOM 123.05 (CTAF)
------------------------	---	--------------------------------



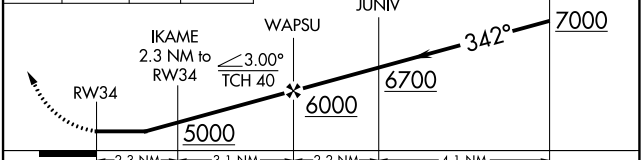
ELEV 4252	D	TDZE 4252
-----------	----------	-----------

REIL Rwy 16 and 34 **⚠**
MIRL Rwy 16-34 **⚠**



Procedure NA for arrivals at ZURNA on V319 southbound and at JTIIP on V401 eastbound.

8500	PEYIP	tr 290°	CRANY
------	-------	---------	-------



CATEGORY	A	B	C	D
LNAV MDA	4680-1	428 (500-1)	4680-1¼	428 (500-1¼)
CIRCLING	4920-1	668 (700-1)	4920-1¾ 668 (700-1¾)	5020-2½ 768 (800-2½)

NW-1, 31 OCT 2024 to 28 NOV 2024

NW-1, 31 OCT 2024 to 28 NOV 2024