

WAAS CH 97421 W05A	APP CRS 053°	Rwy Idg TDZE 124 Apt Elev 125	5342
--	------------------------	---	-------------

RNAV (GPS) RWY 5

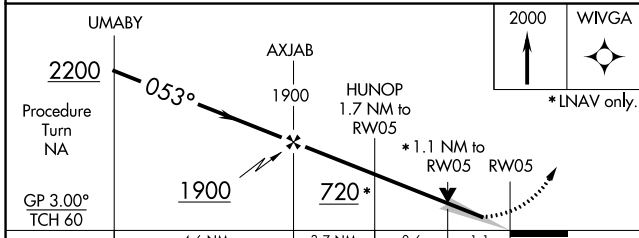
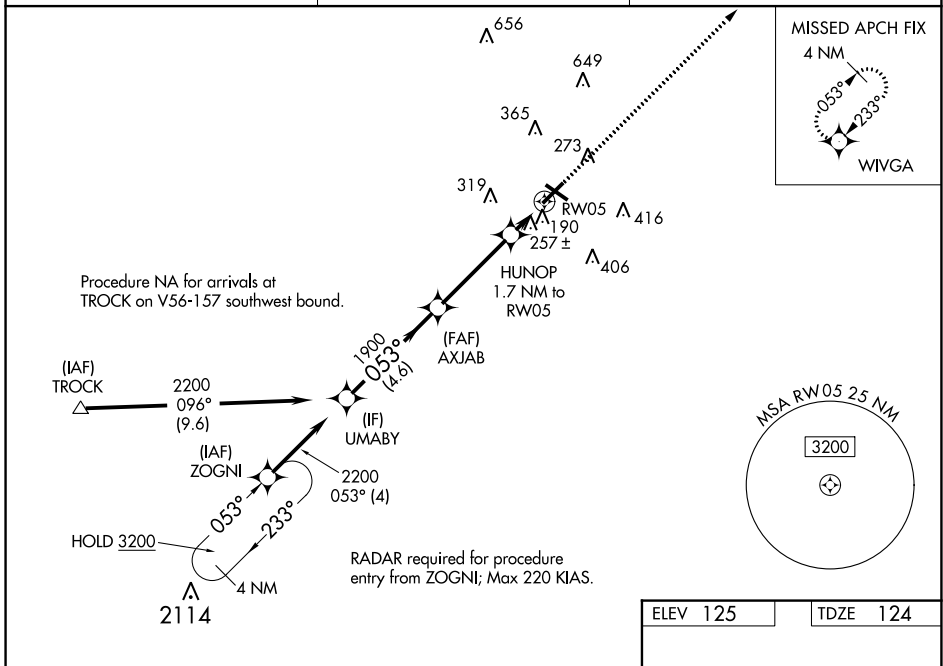
LUMBERTON RGNL (LBT)

RNP APCH - GPS.

⚠ When local altimeter setting not received, use Maxton altimeter setting: increase LPV DA to 383 feet; LNAV/VNAV DA to 594 feet and all visibility ¼ SM; increase all MDAs 60 feet and LNAV visibility Cat C and Circling Cat C ¼ SM. Baro-VNAV and VDP NA when using Maxton altimeter setting. Circling Rwy 13, 31 NA at night. For uncompensated Baro-VNAV systems, LNAV/VNAV NA below -15°C or above 54°C.

MISSED APPROACH:
Climb to 2000 direct WIVGA and hold.

ASOS 134.775	FAYETTEVILLE APP CON 133.0 290.25	UNICOM 122.8 (CTAF)
------------------------	---	-------------------------------



ELEV 125	TDZE 124
----------	----------

MIRA Rwy 5-23

REIL Rwys 5 and 23

CATEGORY	A	B	C	D
LPV DA	327-¾	203 (300-¾)		NA
LNAV/VNAV DA	538-1½	414 (500-1½)		NA
LNAV MDA	520-1	396 (400-1)	520-1½ 396 (400-1½)	NA
CIRCLING	660-1	535 (600-1)	720-1½ 595 (600-1½)	NA

SE-2, 08 AUG 2024 to 05 SEP 2024

SE-2, 08 AUG 2024 to 05 SEP 2024