


VOR/DME P ^{UW}	APP CRS	Rwy Idg	7100
117.15	027°	TDZE	2567
Chan 118 (Y)		Apt Elev	2567

VOR RWY 5

PULLMAN/MOSCOW RGNL (PUW)

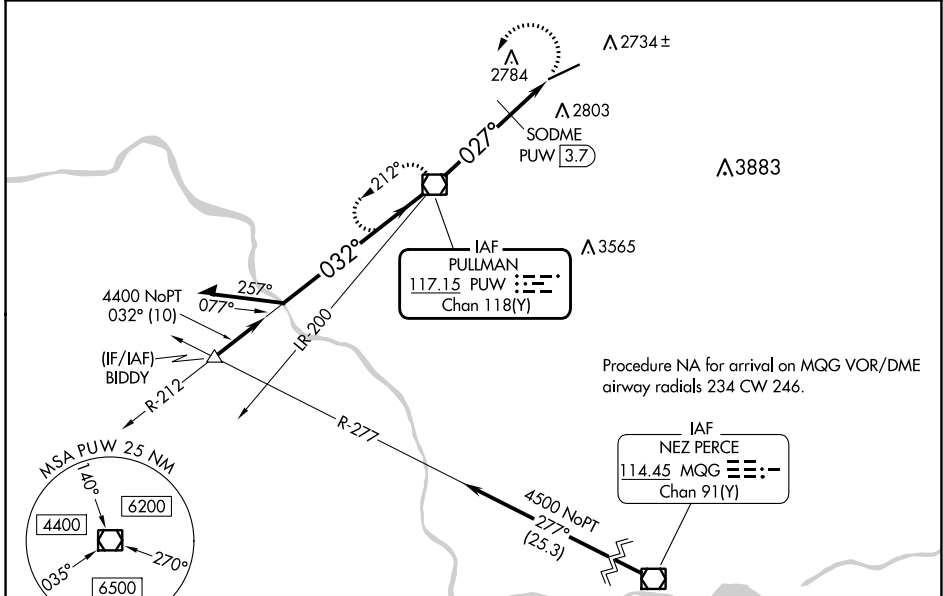
DME required.

▼ Procedure NA at night.
 ▲ Rwy 5 helicopter visibility reduction below 1 SM NA.
 Inop table does not apply to S-5 and SODME fix minimums Cats A/B.
 For inop ALS, increase S-5 SODME fix minimums Cat C/D visibility to 1½ SM.

MALSR 

MISSED APPROACH: Climbing left turn to 6000 direct PUW VOR/DME and hold, continue climb-in-hold to 6000.

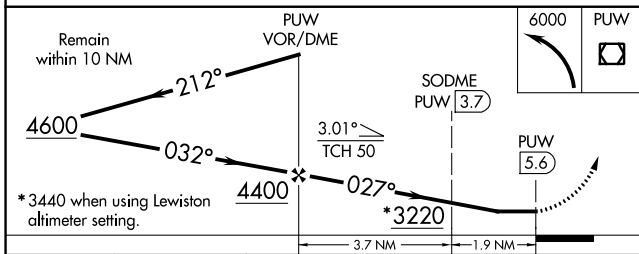
ASOS 135.675	SEATTLE CENTER 123.95 290.55	UNICOM 122.8 (CTAF) 
------------------------	--	---





NW-1, 03 OCT 2024 to 31 OCT 2024

NW-1, 03 OCT 2024 to 31 OCT 2024

ELEV 2567		TDZE 2567
-----------	---	-----------



CATEGORY	A	B	C	D
S-5	3220/50	653 (700-1)	3220-1¾	653 (700-1¾)
 CIRCLING	3220-1	653 (700-1)	3220-1⅞	3420-2¾ 653 (700-1⅞) 853 (900-2¾)
SODME FIX MINIMUMS				
S-5	3040/50 473 (500-1)			
 CIRCLING	3080-1 513 (600-1)	3120-1 553 (600-1)	3140-1½ 573 (600-1½)	3420-2¾ 853 (900-2¾)

