

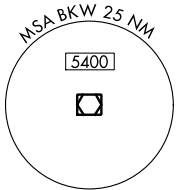
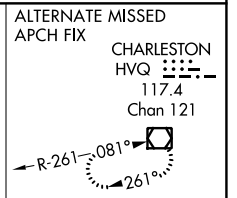
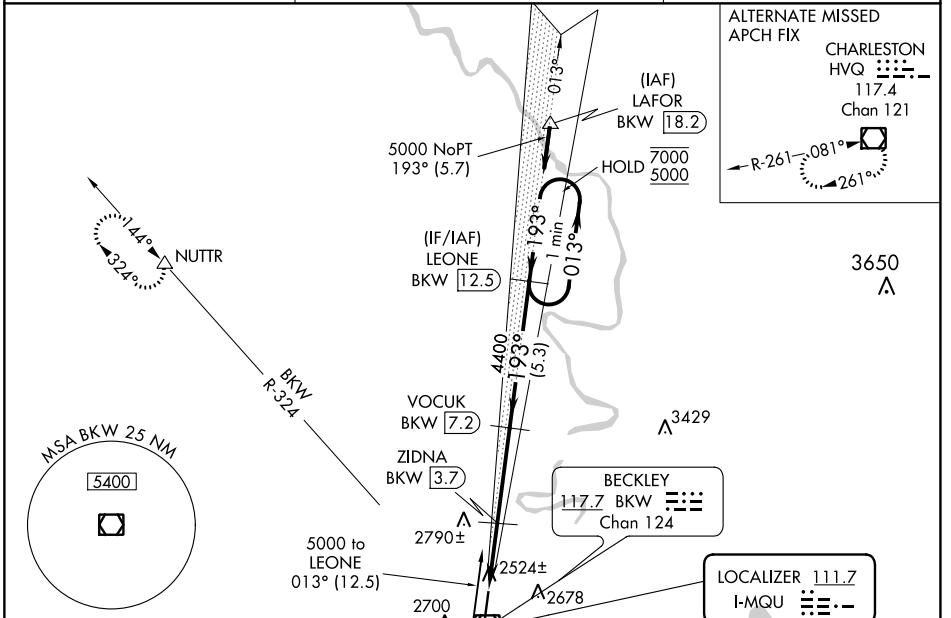
LOC I-MQU <b>111.7</b>	APP CRS <b>193°</b>	Rwy Idg <b>6750</b>
		TDZE <b>2468</b>
		Apt Elev <b>2504</b>

# ILS or LOC RWY 19

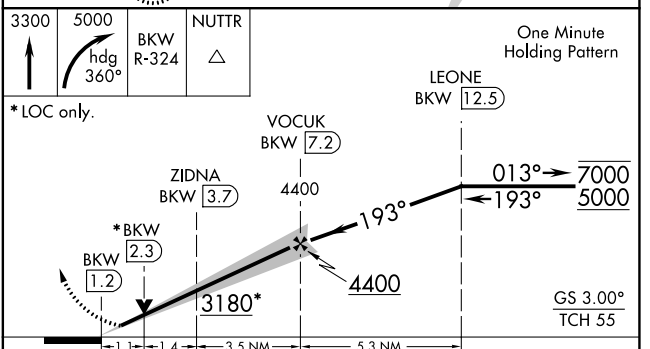
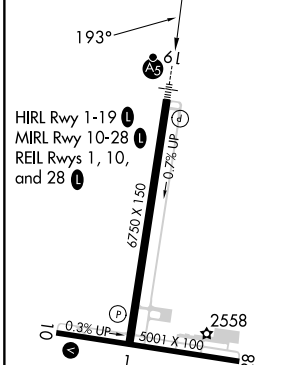
RALEIGH COUNTY MEML (BKW)

DME required.	MALSR	MISSED APPROACH: Climb to 3300 then climbing right turn to 5000 on heading 360° and BKW VOR/DME R-324 to NUTTR INT and hold.
---------------	-------	--

ASOS <b>121.55</b>	CHARLESTON APP CON <b>125.4 269.125</b>	UNICOM <b>123.0 (CTAF)</b>
-----------------------	--	-------------------------------



ELEV 2504	<b>D</b>	TDZE 2468
-----------	----------	-----------



FAF to MAP 6 NM	1	2	3	4	
Knots	60	90	120	150	180
Min:Sec	6:00	4:00	3:00	2:24	2:00
CATEGORY	A	B	C	D	
S-ILS 19	2688-½ 220 (200-½)				
S-LOC 19	2860-½	392 (400-½)	2860-⅝	392 (400-⅝)	
<input checked="" type="checkbox"/> CIRCLING	3120-1 616 (700-1)	3180-1 676 (700-1)	3320-2½ 816 (900-2½)	3500-3 996 (1000-3)	

NE-4, 03 OCT 2024 to 31 OCT 2024

NE-4, 03 OCT 2024 to 31 OCT 2024