

(OBERS4.OBERS) 24025

AL-787 (FAA)

MERCER COUNTY (BLF)  
BLUEFIELD, WEST VIRGINIA

# OBERS FOUR DEPARTURE

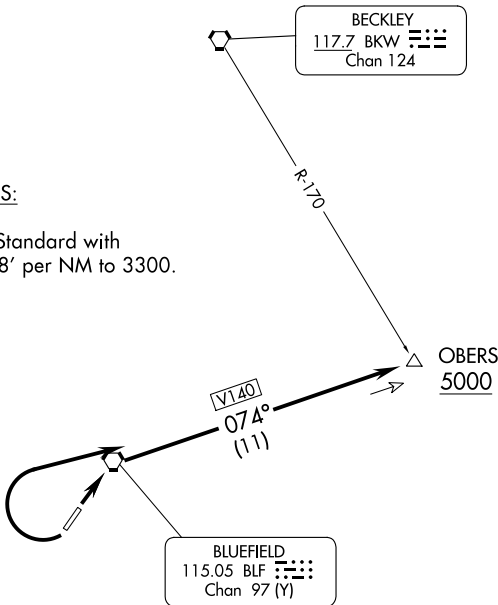
INDANAPOLIS CENTER  
126.575 257.85  
CTAF 122.9  
ASOS 132.725

**TOP ALTITUDE:  
ASSIGNED BY ATC**

TAKE-OFF MINIMUMS:

Rwy 5: Standard.

Rwy 23: 400-2¼ or Standard with  
minimum climb of 238' per NM to 3300.



NOTE: Chart not to scale.



## DEPARTURE ROUTE DESCRIPTION

TAKE-OFF RUNWAY 5: Climb via BLF R-074 to cross OBERS INT at or above 5000' or altitude assigned by ATC. Thence . . . .

TAKE-OFF RUNWAY 23: Climbing right turn via BLF R-074 to cross OBERS INT at or above 5000' or altitude assigned by ATC. Thence . . . .

. . . . via ATC assigned route.

**OBERS FOUR DEPARTURE**  
(OBERS4.OBERS) 21JUL16

BLUEFIELD, WEST VIRGINIA  
MERCER COUNTY (BLF)

NE-4, 31 OCT 2024 to 28 NOV 2024

NE-4, 31 OCT 2024 to 28 NOV 2024