

LOC I-BLF 109.5	APP CRS 229°	Rwy Idg TDZE Apt Elev	4743 2857 2857
---------------------------	------------------------	-----------------------------	---

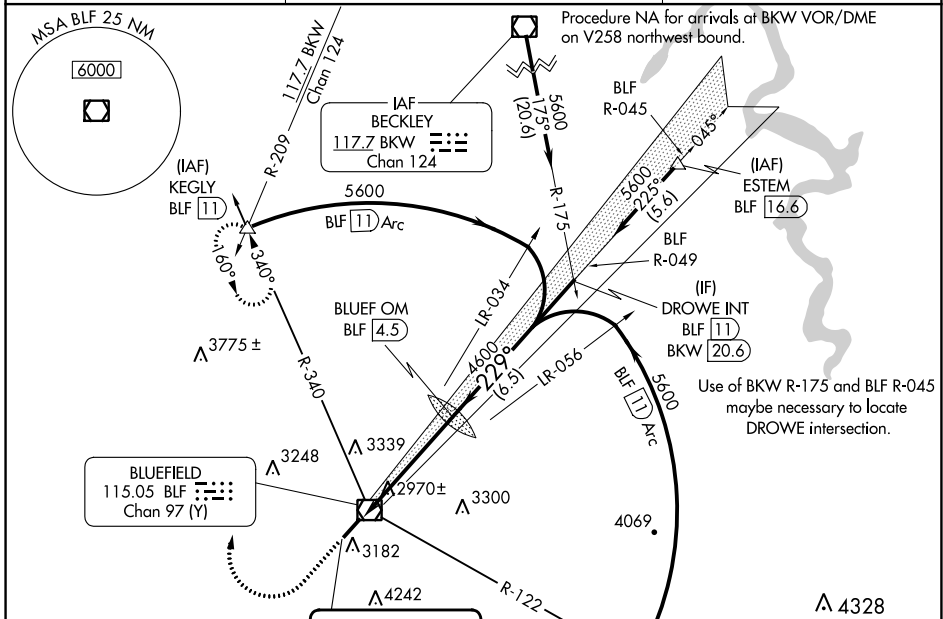
ILS or LOC RWY 23

MERCER COUNTY (BLF)

⚠ Autopilot coupled approach NA below 3600 MSL. When local altimeter setting not received, use Beckley altimeter setting and increase DA to 3600 feet and visibility to 2½ SM; increase all MDAs 460 feet and S-LOC 23 Cat A visibility to 1¼ SM, Cat B to 1½ SM and Cats C and D to 3 SM; increase Circling visibility Cat A to 1¼ SM, Circling Cat B to 1½ SM, Circling Cat C to 3 SM. Circling NA southeast of Rwy 5-23.

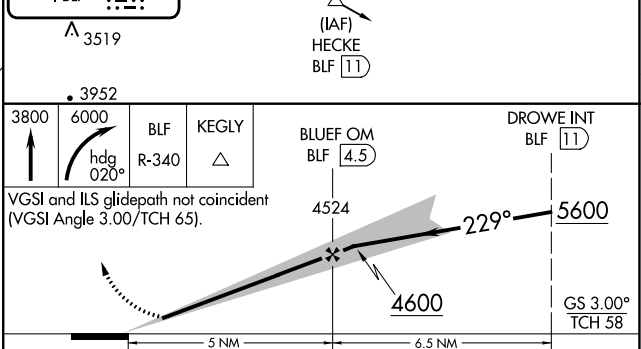
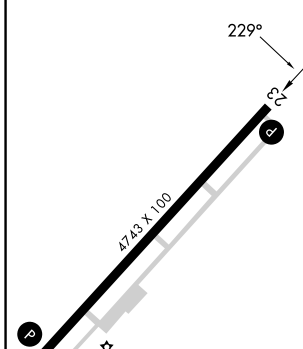
MISSED APPROACH: Climb to 3800 then climbing right turn to 6000 on heading 020° and BLF VOR/DME R-340 to KEGLY INT/BLF 11 DME and hold.

ASOS 132.725	INDIANAPOLIS CENTER 126.575 257.85	CTAF 122.9
------------------------	--	----------------------



ELEV 2857	D	TDZE 2857
-----------	----------	-----------

LOCALIZER 109.5	I-BLF
-----------------	-------



CATEGORY	A	B	C	D
S-ILS 23	3157-1	300 (300-1)		3157- ⁷ / ₈ 300 (300- ⁷ / ₈)
S-LOC 23	3520-1	663 (700-1)	3520-1 ³ / ₄ 663 (700-1 ³ / ₄)	3520-2 663 (700-2)
CIRCLING	3520-1	663 (700-1)	3640-2 ¹ / ₄ 783 (800-2 ¹ / ₄)	3780-3 923 (1000-3)

NE-4, 31 OCT 2024 to 28 NOV 2024

NE-4, 31 OCT 2024 to 28 NOV 2024