

APP CRS <b>081°</b>	Rwy Idg TDZE Apt Elev	<b>N/A</b> <b>N/A</b> <b>3966</b>
------------------------	-----------------------------	---

# RNAV (GPS)-C

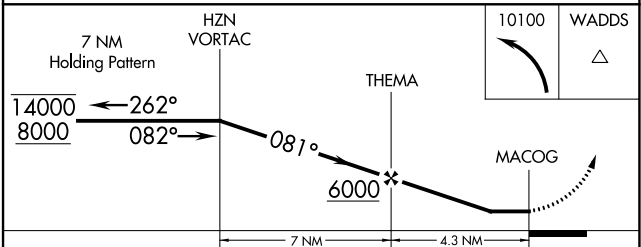
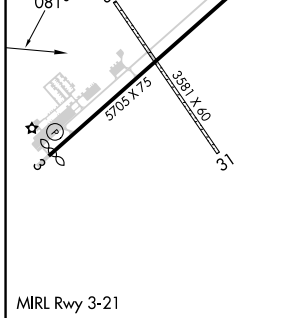
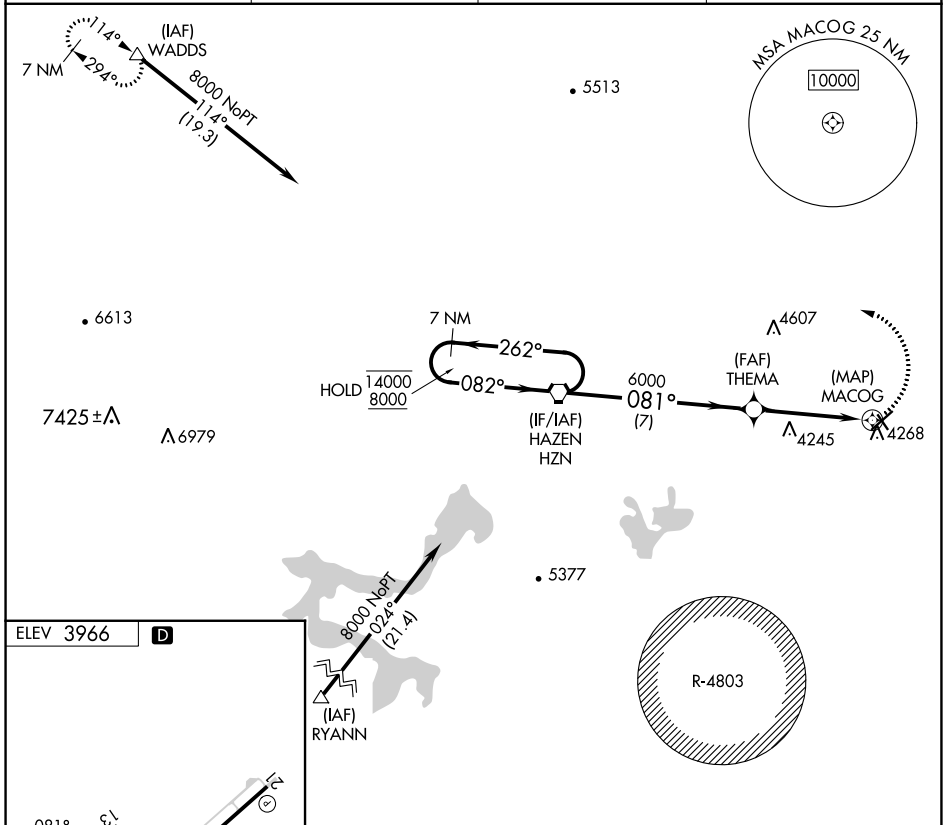
FALLON MUNI (F.LX)

**RNP APCH.**

▼ Circling NA to Rwys 13 and 31. Circling to Rwy 21 NA at night. When local altimeter not received, use Fallon NAS altimeter setting.

MISSED APPROACH: Climbing left turn to 10100 direct WADDS and hold, continue climb-in-hold 10100.

AWOS-AV <b>118.25</b>	KNFL ATIS * <b>370.925</b>	NAVY FALLON APP CON * <b>120.85 360.2</b>	UNICOM <b>122.8</b> (CTAF)
--------------------------	-------------------------------	--	-------------------------------



CATEGORY	A	B	C	D
<b>C</b> CIRCLING	4620-1	654 (700-1)	4620-1¾ 654 (700-1¾)	4620-2 654 (700-2)

SW-4, 03 OCT 2024 to 31 OCT 2024

SW-4, 03 OCT 2024 to 31 OCT 2024