

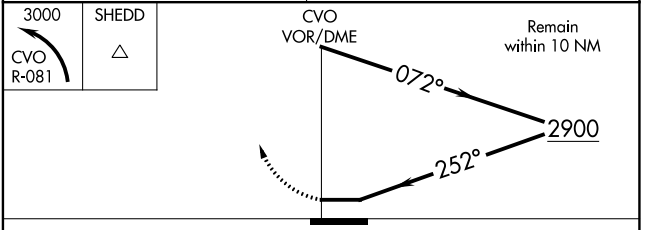
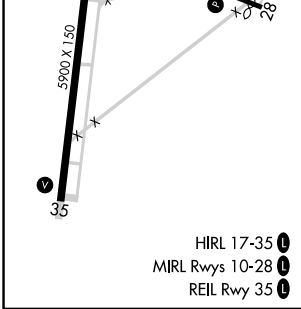
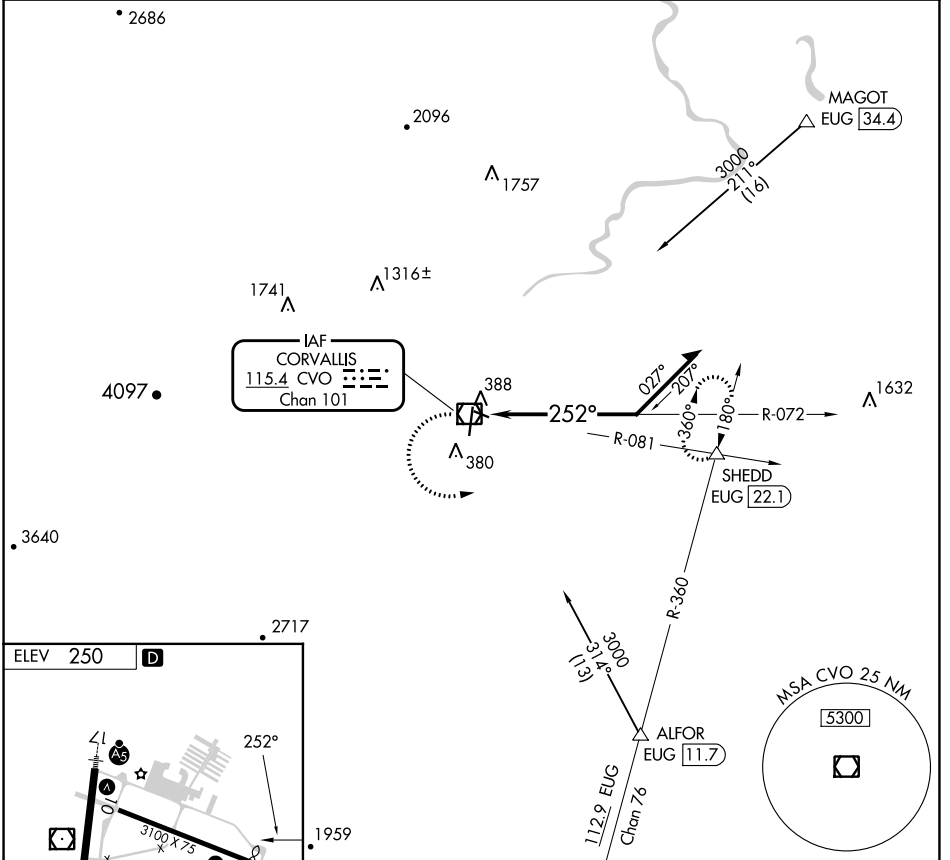
VOR/DME CVO <b>115.4</b> Chan <b>101</b>	APP CRS <b>252°</b>	Rwy Idg TDZE Apt Elev <b>N/A</b> <b>N/A</b> <b>250</b>
--	------------------------	--

**VOR-A**  
CORVALLIS MUNI (CVO)

**⚠** When local altimeter setting not received, procedure NA.  
Circling Rwy 28 NA at night.

MISSED APPROACH: Climbing left turn to 3000 on CVO VOR/DME R-081 to SHEDD INT/EUG 22.1 DME and hold, continue climb-in-hold to 3000.

AWOS-3PT <b>135,775</b>	CASCADE APP CON * <b>127.5 348.7</b>	UNICOM <b>123.075 (CTAF) 0</b>
----------------------------	---	-----------------------------------



CATEGORY	A	B	C	D
<b>☑</b> CIRCLING	1400-1¼ 1150 (1200-1¼)	1400-1½ 1150 (1200-1½)	1400-3	1150 (1200-3)

NW-1, 03 OCT 2024 to 31 OCT 2024

NW-1, 03 OCT 2024 to 31 OCT 2024