

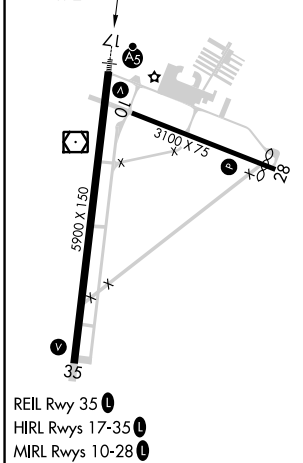
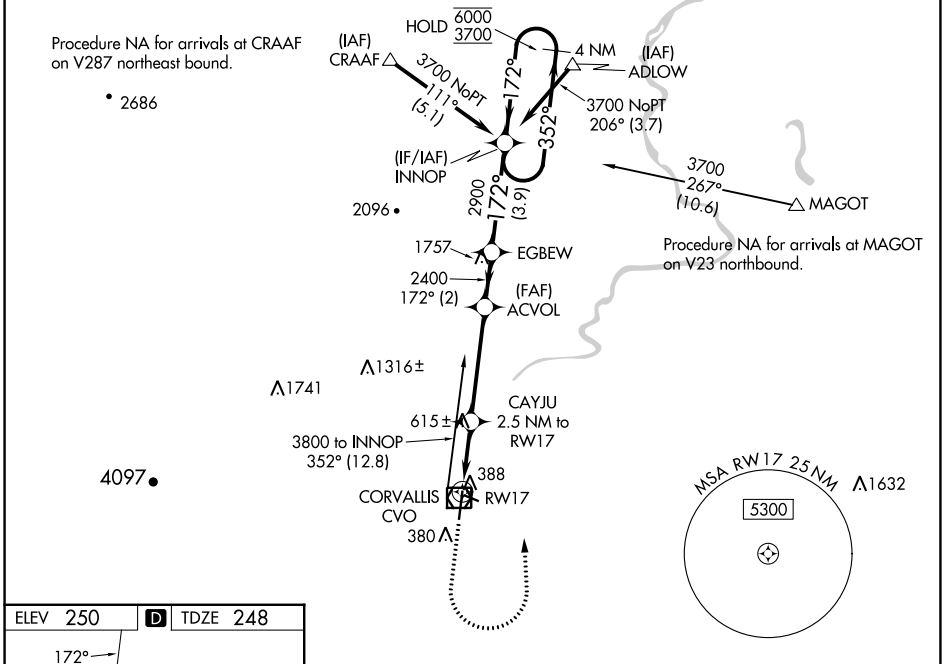
WAAS CH <b>78311</b>	APP CRS <b>172°</b>	Rwy Idg TDZE Apt Elev	<b>5900</b> <b>248</b> <b>250</b>
-------------------------	------------------------	-----------------------------	---

# RNAV (GPS) RWY 17

CORVALLIS MUNI (CVO)

RNP APCH - GPS.	MALSR	MISSED APPROACH: Climb to 1100 then climbing left turn to 3700 direct INNOP and hold, continue climb-in-hold to 3700.
<p><b>⚠</b> Circling Rwy 28 NA at night. For uncompensated Baro-VNAV systems, LNAV/VNAV NA below -15°C or above 54°C. When local altimeter setting not received, procedure NA. For inop ALS, increase LNAV Cat C/D visibility to 1¼ SM.</p>		

AWOS-3PT <b>135.775</b>	CASCADE APP CON * <b>127.5 348.7</b>	UNICOM <b>123.075 (CTAF)</b>
----------------------------	---	---------------------------------



1100	3700	INNOP	INNOP	
↑	↶	☀	4 NM Holding Pattern	
			ACVOL	EGBEW
			2400	2900
			172°	352°
			1080	6000
			2400	3700
			1.8 NM	GP 3.00° TCH 45
			0.7	
			4.1 NM	
			2 NM	
			3.9 NM	
CATEGORY	A	B	C	D
LPV DA		448-½	200 (200-½)	
LNAV/VNAV DA		571-½	323 (400-½)	
LNAV MDA	880-½	632 (700-½)	880-1¾	632 (700-1¾)
<b>C</b> CIRCLING	880-1	630 (700-1)	920-1¾	1080-2¾
			670 (700-1¾)	830 (900-2¾)

NW-1, 03 OCT 2024 to 31 OCT 2024

NW-1, 03 OCT 2024 to 31 OCT 2024