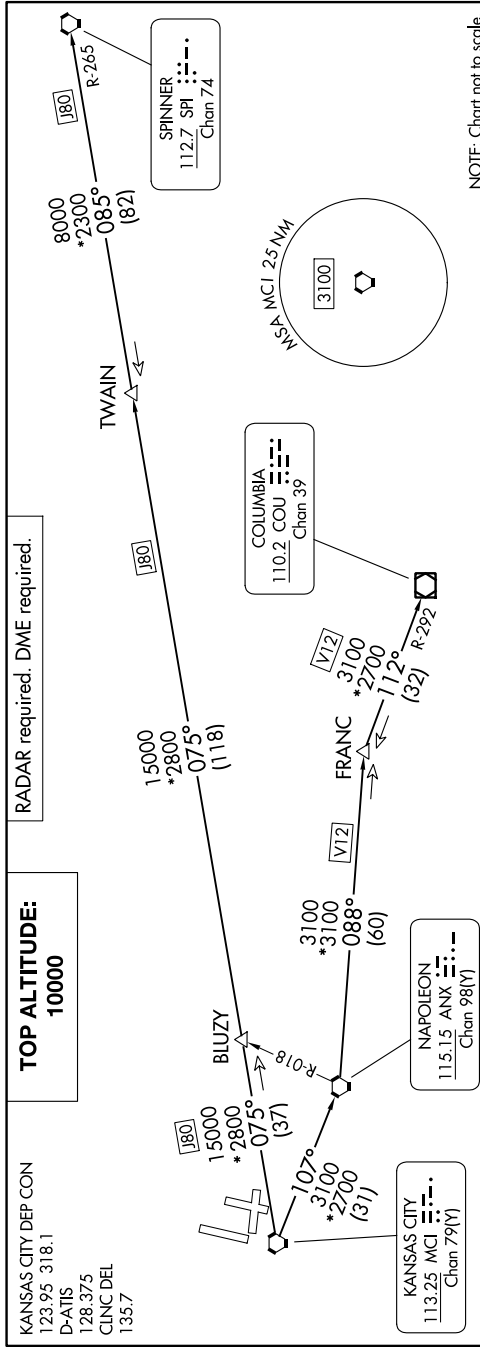


LAKES FIVE DEPARTURE

AL-780 (FAA)

KANSAS CITY INTL (MCI)
KANSAS CITY, MISSOURI

NC-3, 05 SEP 2024 to 03 OCT 2024



NOTE: Chart not to scale.

DEPARTURE ROUTE DESCRIPTION

TAKEOFF ALL RUNWAYS: Climb on assigned heading for RADAR vectors to appropriate route. Maintain 10000 or as assigned by ATC. Expect filed altitude 10 minutes after departure.

COLUMBIA TRANSITION [LAKES5.CO]: From over MCI VORTAC on MCI R-107 to ANX VORTAC, then on ANX R-088 and COU R-292 to COU VOR/DME.

FRANC TRANSITION [LAKES5.FRANC]: From over MCI VORTAC on MCI R-107 to ANX VORTAC, then on ANX R-088 to FRANC.

SPINNER TRANSITION [LAKES5.SPI]: From over MCI VORTAC on MCI R-265 to SPI VORTAC.

TWAIN TRANSITION [LAKES5.TWAIN]: From over MCI VORTAC on MCI R-075 and SPI R-265 to TWAIN.

TAKEOFF MINIMUMS
Rwys 1L/R, 9, 19L/R, 27: Standard.

NC-3, 05 SEP 2024 to 03 OCT 2024