

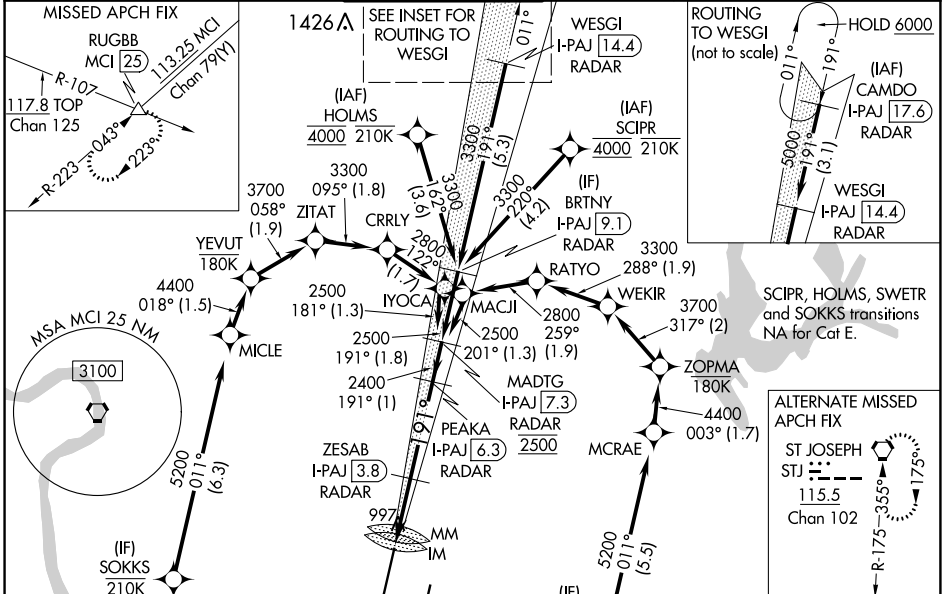
LOC/DME I-PAJ <b>109.1</b> Chan 28	APP CRS <b>191°</b>	Rwy Idg <b>10801</b> TDZE <b>991</b> Apt Elev <b>1027</b>
--	------------------------	---

# ILS or LOC RWY 19R

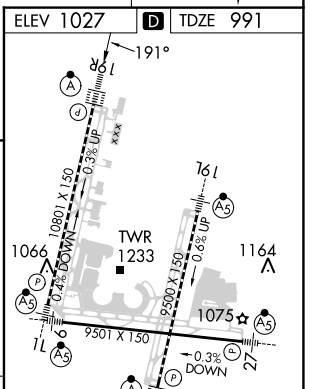
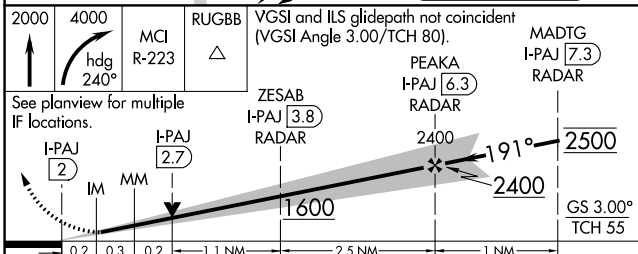
KANSAS CITY INTL (MCI)

RNP APCH - GPS. From SCIPR or HOLMS or SWETR or SOKKS.		ALSF-2 	MISSED APPROACH: Climb to 2000 then climbing right turn to 4000 on heading 240° and MCI VORTAC R-223 to RUGBB INT/MCI 25 DME and hold.
DME or RADAR required. RADAR required for procedure entry at CAMDO.			
For inop ALS, increase S-ILS 19R Cat E visibility to RVR 4000 and S-LOC 19R Cat C/D/E to RVR 4500. Simultaneous approach authorized except from SCIPR, HOLMS, SOKKS and SWETR.			

D-ATIS <b>128.375</b>	KANSAS CITY APP CON <b>120.95 318.1</b>	INTERNATIONAL TOWER <b>128.2 254.25</b>	GND CON <b>121.8</b>	CLNC DEL <b>135.7</b>	CPDLC
--------------------------	--	--	-------------------------	--------------------------	-------



ELEV 1027	<b>D</b> TDZE 991
LOCALIZER 109.1 I-PAJ Chan 28	



CATEGORY	A	B	C	D	E
S-ILS 19R		1191/18	200 (200-½)		
S-LOC 19R		1280/24	289 (300-½)		
<b>C</b> CIRCLING	1540-1 513 (600-1)	1540-1½ 513 (600-1½)	1580-2	553 (600-2)	

HIRL all Rwys					
TDZ/CL Rwys 1L, 1R, 19L and 19R					
FAF to MAP 4.3 NM					
Knots	60	90	120	150	180
Min:Sec	4:18	2:52	2:09	1:43	1:26

NC-3, 05 SEP 2024 to 03 OCT 2024

NC-3, 05 SEP 2024 to 03 OCT 2024