

WAAS CH 50415 W14A	APP CRS 144°	Rwy Idg TDZE Apt Elev	6602 1083 1099
--	------------------------	-----------------------------	---

RNAV (GPS) Z RWY 14

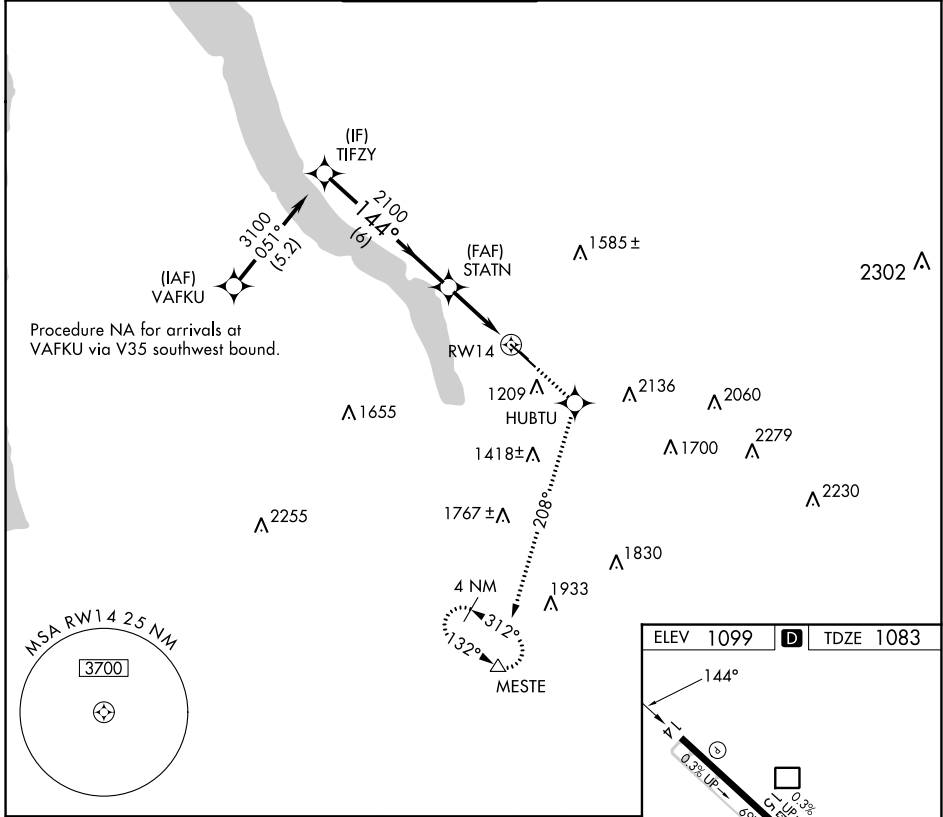
ITHACA TOMPKINS INTL (ITH)

⚠ DME/DME RNP-0.3 NA. Visibility reduction by helicopters NA. When local altimeter setting not received, use Elmira altimeter setting and increase DA 84 feet and LPV all Cats visibility ¼ mile.

⚠ MISSED APPROACH: Climb to 3800 direct HUBTU and via track 208° to MESTE and hold.

❄ -19°C

ATIS 125.175	ELMIRA APP CON ★ 124.3 257.8	ITHACA TOWER ★ 119.6 (CTAF) 0	GND CON 121.8	CLNC DEL 121.8	UNICOM 122.95
------------------------	--	---	-------------------------	--------------------------	-------------------------



NE-2, 03 OCT 2024 to 31 OCT 2024

NE-2, 03 OCT 2024 to 31 OCT 2024

