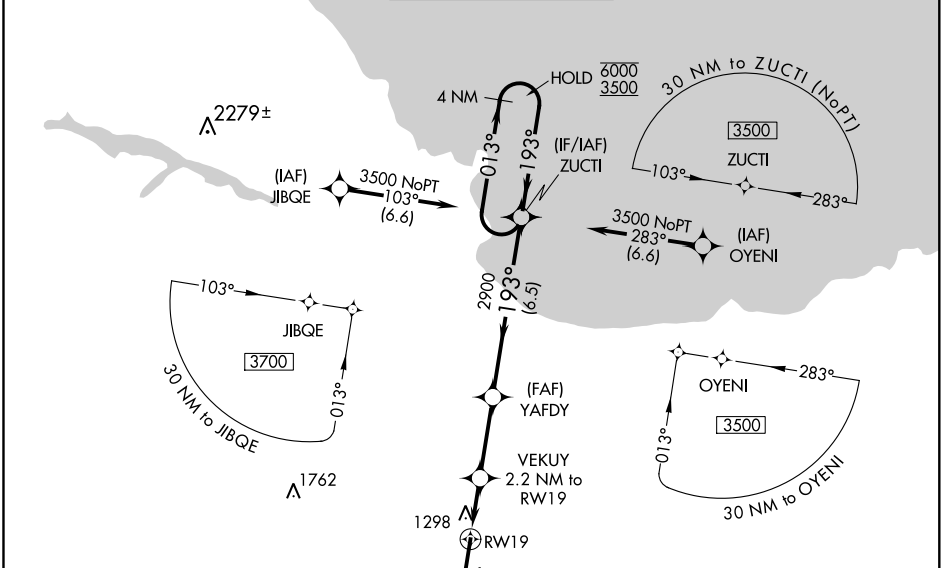


WAAS CH 86616 W19A	APP CRS 193°	Rwy Idg TDZE Apt Elev	9072 1204 1204
----------------------------------------	------------------------	-----------------------------	-------------------------------------------

RNAV (GPS) RWY 19

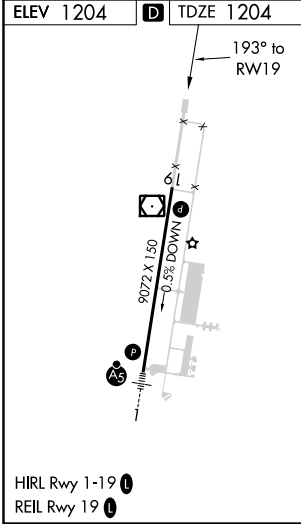
SAWYER INTL (SAW)

RNP APCH. ▼ For uncompensated Baro-VNAV systems, LNAV/VNAV NA below -17°C or above 54°C.		MISSED APPROACH: Climb to 3500 direct EVYIP and hold.		
AWOS-3 118.375	MINNEAPOLIS CENTER 119.1 290.2	SAWYER TOWER ★ 119.975 (CTAF) ①	GND CON 121.65	UNICOM 122.7



EC-1, 02 DEC 2021 to 30 DEC 2021

EC-1, 02 DEC 2021 to 30 DEC 2021



3500	EVIYP	VGSI and RNAV glidepath not coincident. (VGSI Angle 3.00°/TCH 53).	4 NM Holding Pattern	
* LNAV only				
VEKUY 2.2 NM to RW19	YAFDY	ZUCTI	GP 3.00° TCH 60	
1.6 NM	0.6 NM	2.9 NM	6.5 NM	
1960	2900	6000	3500	
1.6 NM	0.6 NM	2.9 NM	6.5 NM	
CATEGORY	A	B	C	D
LPV DA	1404- ³ / ₄		200 (200- ³ / ₄)	
LNAV/VNAV DA	1521- ⁷ / ₈		317 (400- ⁷ / ₈)	
LNAV MDA	1620-1	416 (500-1)	1620-1 ¹ / ₈	416 (500-1 ¹ / ₈)
C CIRCLING	1680-1	476 (500-1)	1820-1 ³ / ₄	1820-2
			616 (700-1 ³ / ₄)	616 (700-2)