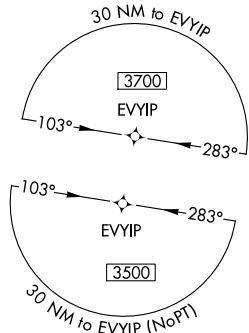
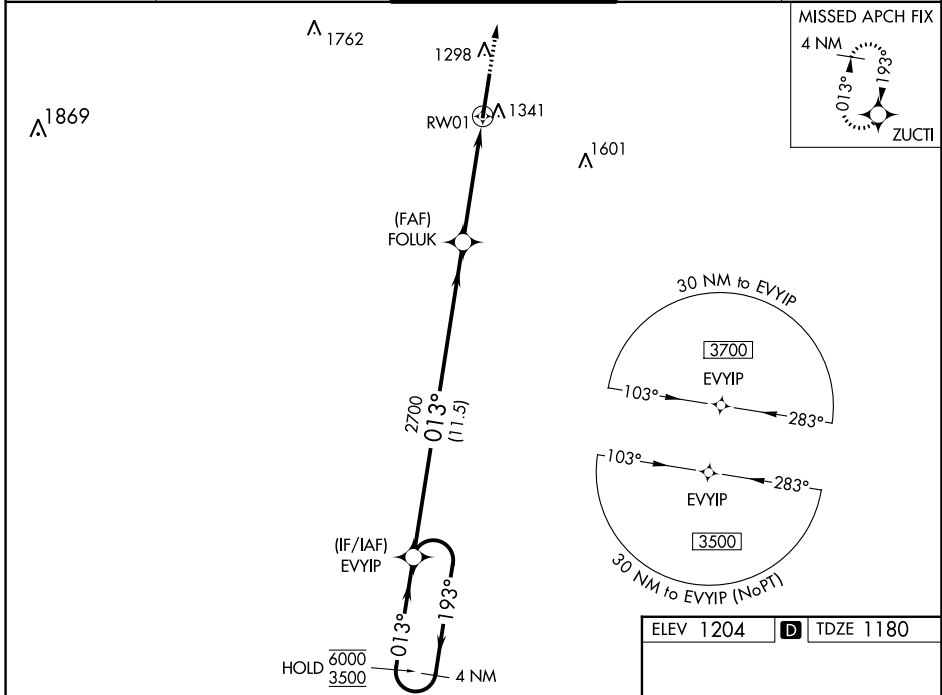


WAAS CH <b>97431</b> <b>W01A</b>	APP CRS <b>013°</b>	Rwy Idg TDZE Apt Elev	<b>9072</b> <b>1180</b> <b>1204</b>
--	------------------------	-----------------------------	---

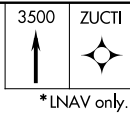
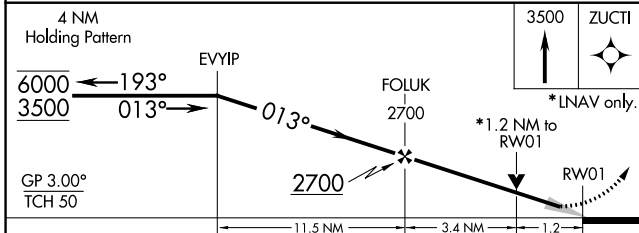
# RNAV (GPS) RWY 1

MARQUETTE/SAWYER RGNL (SAW)

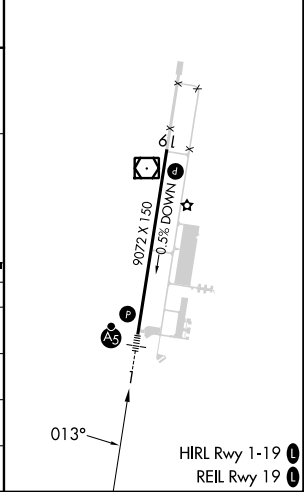
RNP APCH.		SAWYER TOWER ★ <b>119.975</b> (CTAF) <b>1</b>		GND CON <b>121.65</b>	UNICOM <b>122.7</b>
▼ For inop ALS, increase LNAV Cat C/D visibility to 1½ SM. For uncompensated Baro-VNAV systems, LNAV/VNAV NA below -17°C or above 54°C.		MALSR		MISSED APPROACH: Climb to 3500 direct ZUCTI and hold.	
AWOS-3PT <b>118.375</b>	MINNEAPOLIS CENTER <b>119.1 290.2</b>				



ELEV 1204	<b>D</b> TDZE 1180
-----------	--------------------



CATEGORY	A	B	C	D
LPV DA		1380-½	200 (200-½)	
LNAV/VNAV DA		1503-½	323 (300-½)	
LNAV MDA	1600-½	420 (400-½)	1600-¾	420 (400-¾)
<b>C</b> CIRCLING	1680-1	476 (500-1)	1820-1¾ 616 (700-1¾)	1820-2 616 (700-2)



EC-1, 31 OCT 2024 to 28 NOV 2024

EC-1, 31 OCT 2024 to 28 NOV 2024