

VOR RAL <b>108.6</b>	APP CRS <b>270°</b>	Rwy Idg TDZE Apt Elev <b>N/A</b> <b>N/A</b> <b>819</b>
-------------------------	------------------------	---

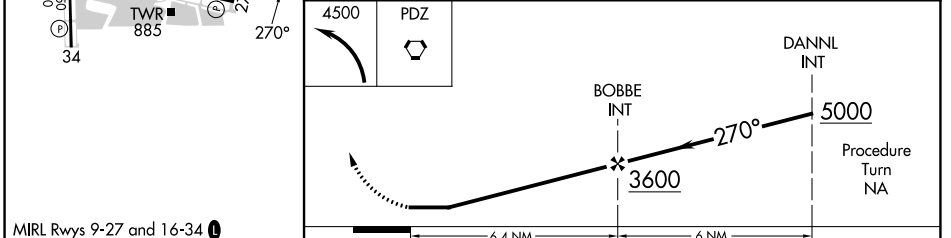
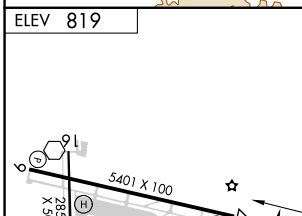
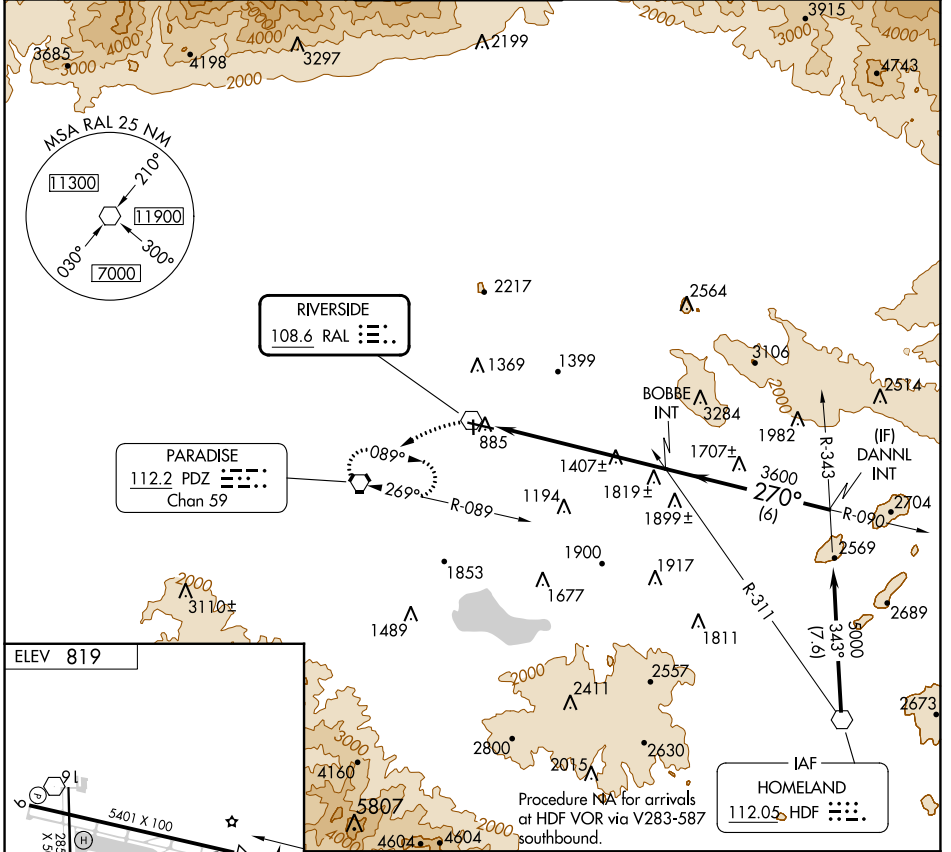
# VOR-A

RIVERSIDE MUNI (RAL)

**⚠** When local alimeter setting not received, use Chino alimeter setting and increase all MDAs 60 feet.

**⚠** MISSED APPROACH: Climbing left turn to 4500 direct PDZ VORTAC and hold, continue climb-in-hold to 4500.

ATIS <b>128.8</b>	SOCAL APP CON <b>135.4 377.125</b>	<b>RIVERSIDE TOWER ★</b> <b>121.0 (CTAF) 257.8</b>	GND CON <b>124.12</b>	UNICOM <b>122.95</b>
----------------------	---------------------------------------	---	--------------------------	-------------------------



MIRL Rws 9-27 and 16-34	FAF to MAP 6.4 NM	CATEGORY	A	B	C	D
Knots	60 90 120 150 180	CIRCLING	2300-1¼	2300-1½	2300-3	NA
Min:Sec	6:24 4:16 3:12 2:34 2:08		1481 (1500-1¼)	1481 (1500-1½)	1481 (1500-3)	

SW-3, 03 OCT 2024 to 31 OCT 2024

SW-3, 03 OCT 2024 to 31 OCT 2024