

VOR RAL <b>108.6</b>	APP CRS <b>079°</b>	Rwy Idg TDZE Apt Elev	<b>5401</b> <b>795</b> <b>819</b>
-------------------------	------------------------	-----------------------------	-----------------------------------------

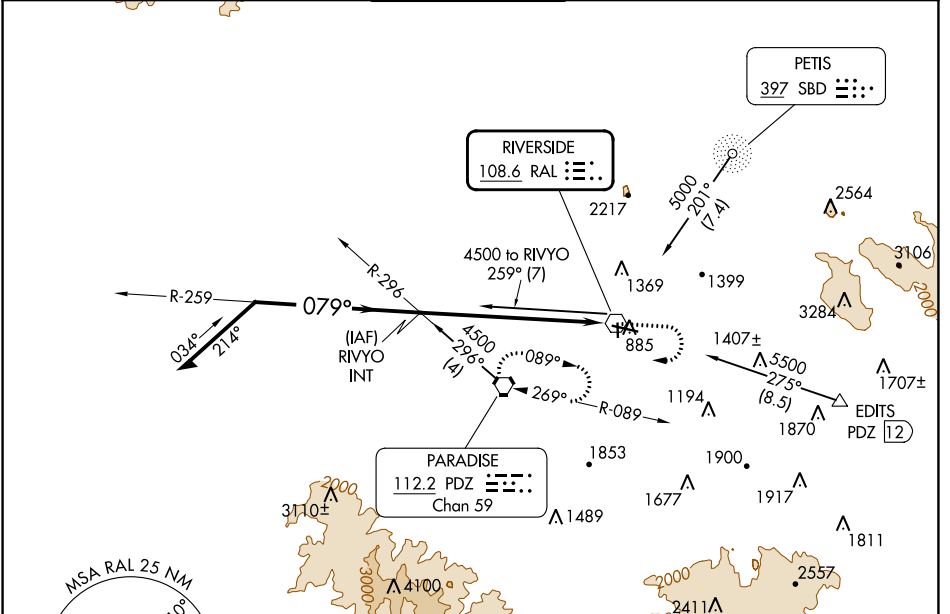
# VOR RWY 9

RIVERSIDE MUNI (RAL)

**⚠** When local altimeter setting not received, use Chino altimeter setting and increase MDA 60 feet.

MISSED APPROACH: Climb to 2800 then climbing right turn to 4600 direct PDZ VORTAC and hold.

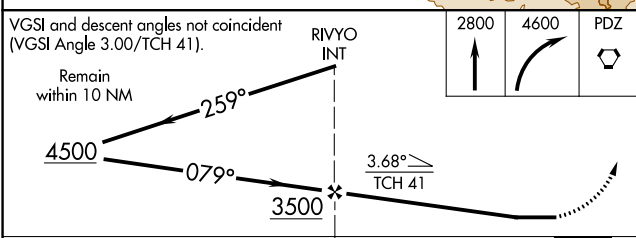
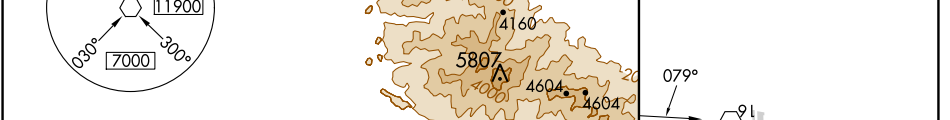
ATIS <b>128.8</b>	SOCAL APP CON <b>135.4 377.125</b>	<b>RIVERSIDE TOWER ★</b> <b>121.0 (CTAF) 0 257.8</b>	GND CON <b>124.12</b>	UNICOM <b>122.95</b>
----------------------	---------------------------------------	---------------------------------------------------------	--------------------------	-------------------------



SW-3, 03 OCT 2024 to 31 OCT 2024

SW-3, 03 OCT 2024 to 31 OCT 2024

ELEV 819	TDZE 795
----------	----------



CATEGORY	A	B	C	D
S-9	2020-1¼ 1225 (1300-1¼)	2020-1½ 1225 (1300-1½)	2020-3 1225 (1300-3)	NA
<b>CIRCLING</b>	2020-1¼ 1201 (1300-1¼)	2020-1½ 1201 (1300-1½)	2020-3 1201 (1300-3)	NA

MIRL Rwy 9-27 and 16-34 **⓪**

FAF to MAP 6.9 NM

Knots	60	90	120	150	180
Min:Sec	6:54	4:36	3:27	2:46	2:18