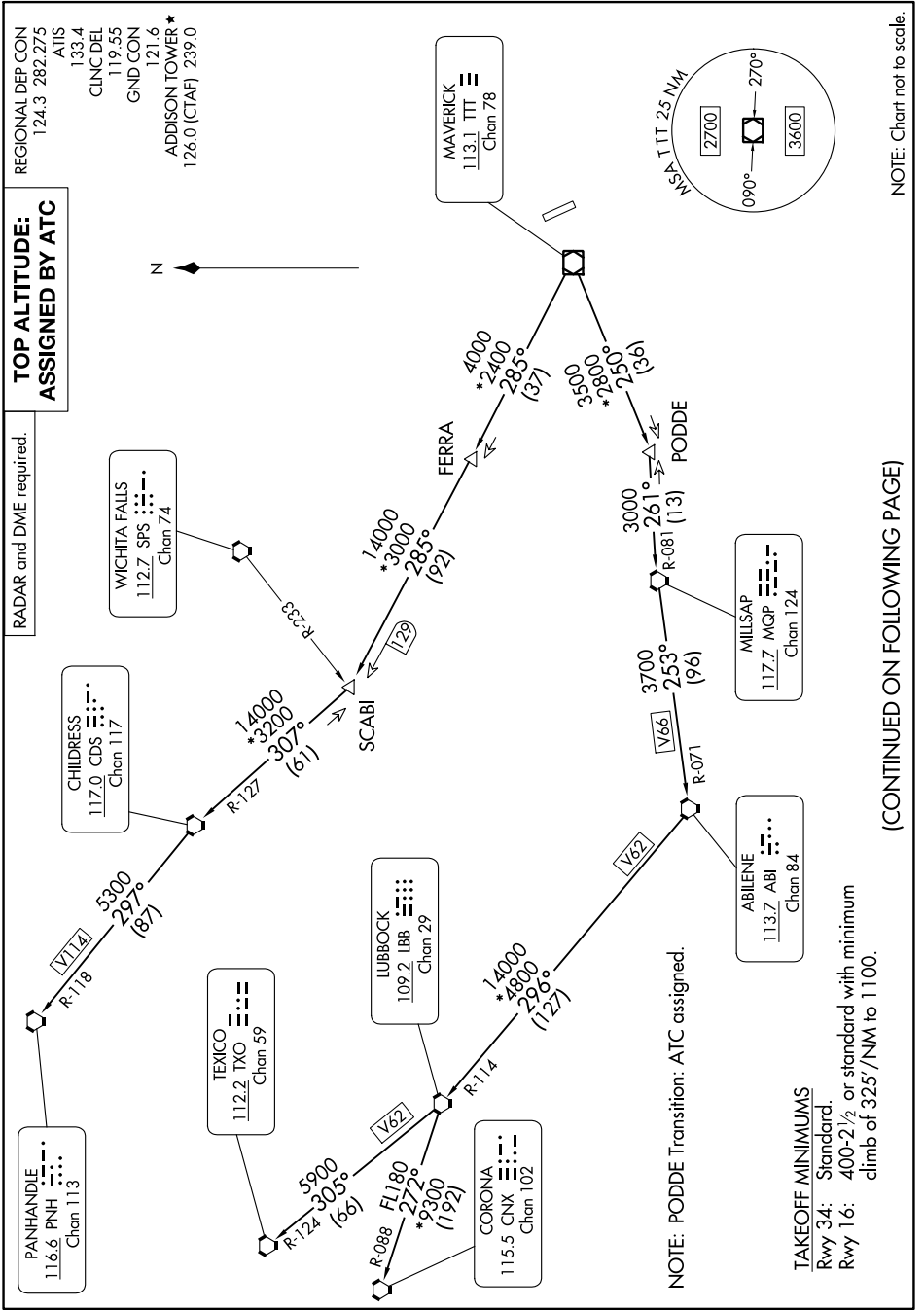


WORTH ONE DEPARTURE

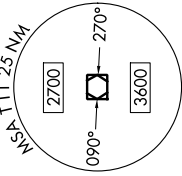
SC-2, 11 JUL 2024 to 08 AUG 2024



**TOP ALTITUDE:
ASSIGNED BY ATC**

RADAR and DME required.

REGIONAL DEP CON
124.3 282.275
ATIS
133.4
CLNC DEL
119.55
GND CON
121.6
ADDISON TOWER *
126.0 (CTAF) 239.0



NOTE: Chart not to scale.

(CONTINUED ON FOLLOWING PAGE)

SC-2, 11 JUL 2024 to 08 AUG 2024

WORTH ONE DEPARTURE

NOTE: PODDE Transition: ATC assigned.

TAKEOFF MINIMUMS
Rwy 34: Standard.
Rwy 16: 400-2½ or standard with minimum climb of 325'/NM to 1100.