

TEXOMA FIVE DEPARTURE

LONE STAR DEP CON
124.3 282.275
ATIS
133.4
CLNC DEL
119.55
GND CON
121.6
ADDISON TOWER ★
126.0 (CTAF) 239.0

**TOP ALTITUDE:
ASSIGNED BY ATC**

TULSA
114.4 TUL :...:
Chan 91

RADAR and DME required.

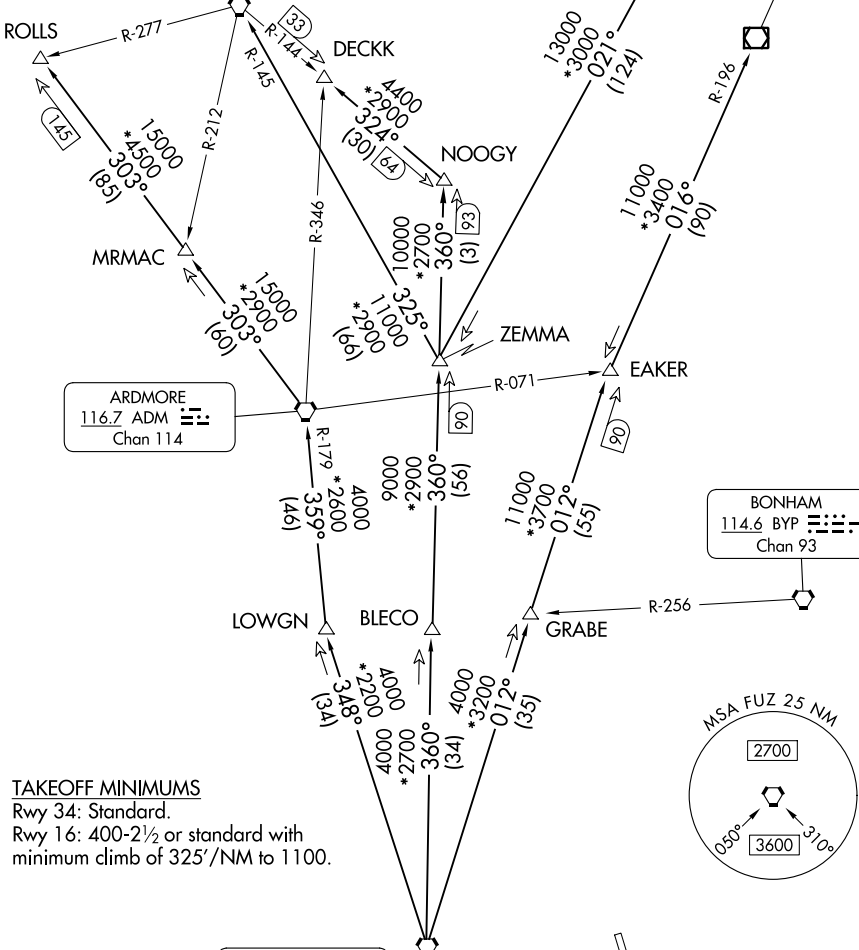
WILL ROGERS
114.1 IRW :...:
Chan 88

OKMULGEE
114.9 OKM :...:
Chan 96

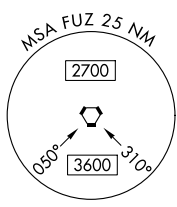
ARDMORE
116.7 ADM :...:
Chan 114

BONHAM
114.6 BYP :...:
Chan 93

RANGER
115.7 FUZ :...:
Chan 104



TAKEOFF MINIMUMS
Rwy 34: Standard.
Rwy 16: 400-2½ or standard with
minimum climb of 325'/NM to 1100.



NOTE: Chart not to scale.

(CONTINUED ON FOLLOWING PAGE)

SC-2, 31 OCT 2024 to 28 NOV 2024

SC-2, 31 OCT 2024 to 28 NOV 2024