

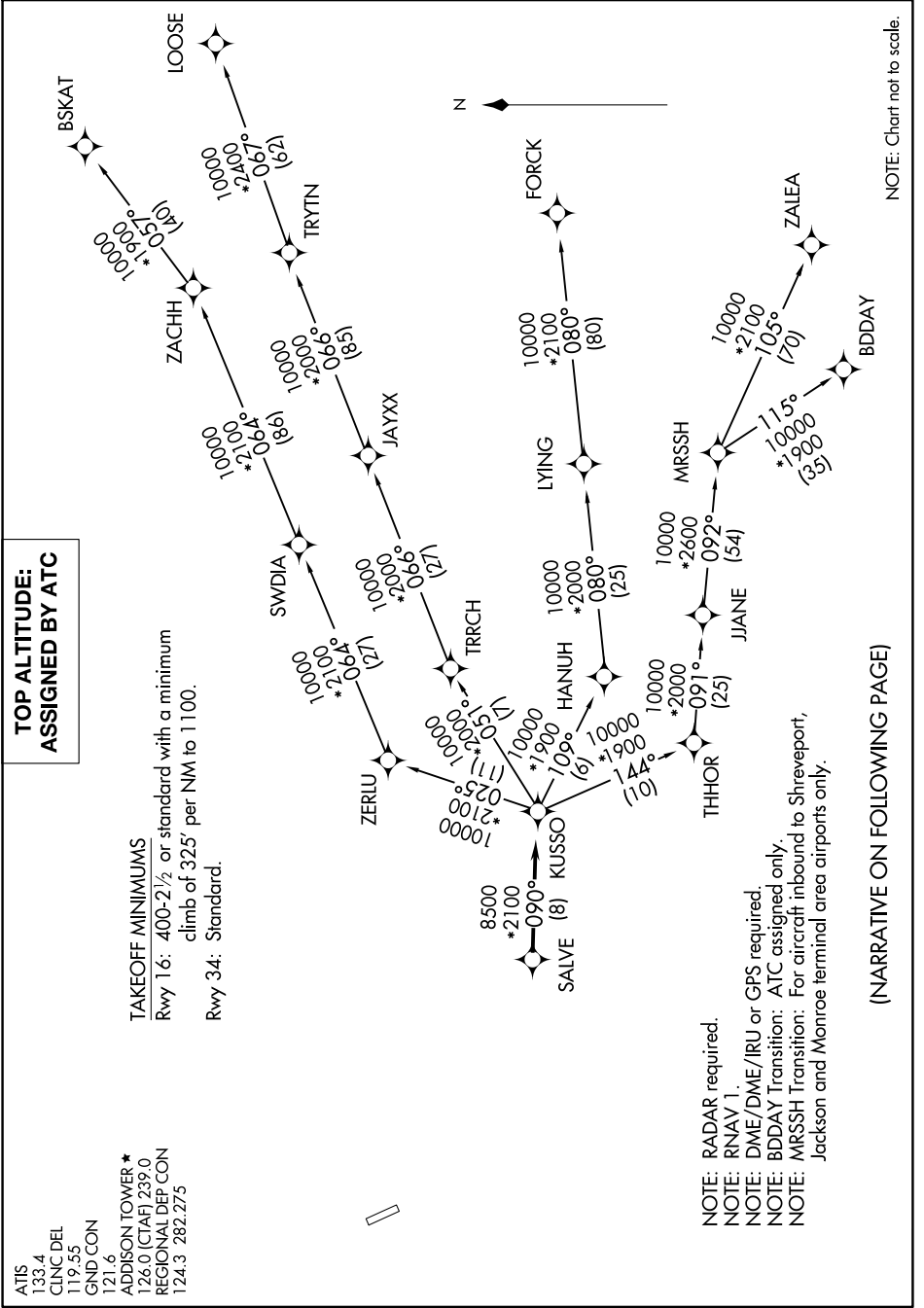
KUSSO ONE DEPARTURE (RNAV)

SC-2, 21 MAR 2024 to 18 APR 2024

**TOP ALTITUDE:
ASSIGNED BY ATC**

TAKEOFF MINIMUMS
Rwy 16: 400-2½ or standard with a minimum
climb of 325' per NM to 1100.
Rwy 34: Standard.

ATIS
133.4
CLNC DEL
119.55
GND CON
121.6
ADDISON TOWER *
128.0 (CTAF) 239.0
REGIONAL DEP CON
124.3 282.275



SC-2, 21 MAR 2024 to 18 APR 2024