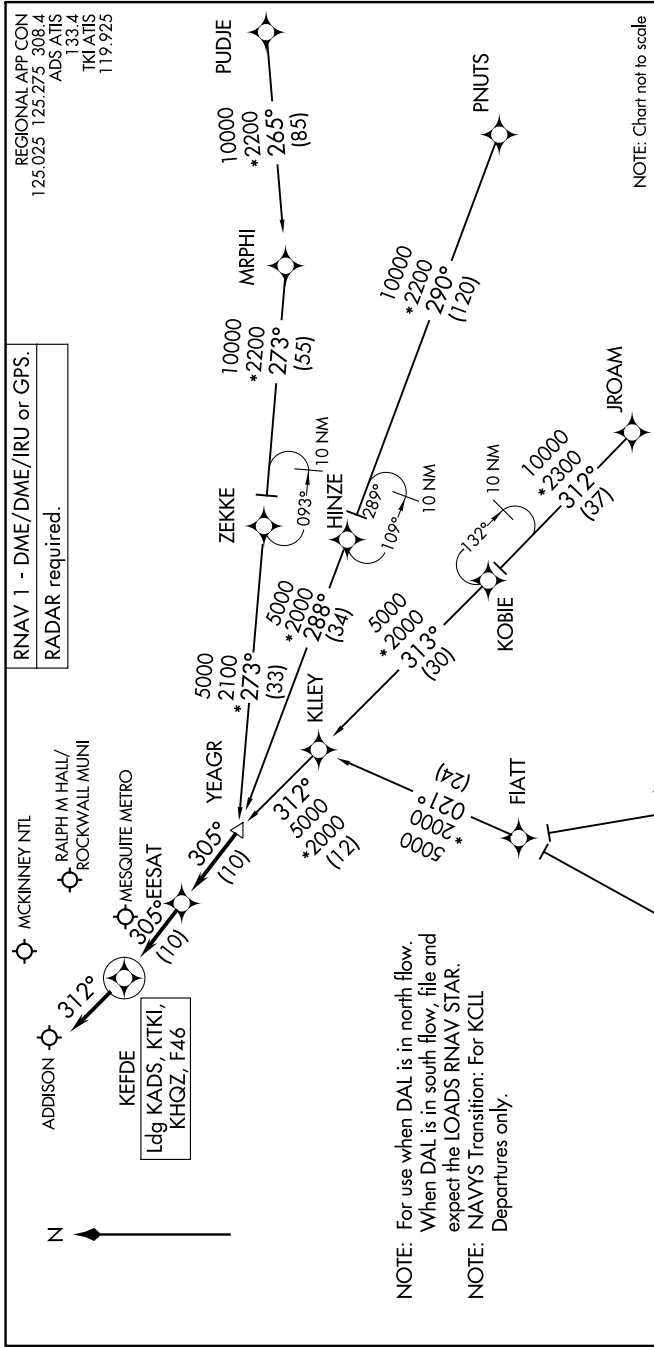


EESAT FOUR ARRIVAL (RNAV)

DALLAS, TEXAS

SC-2, 18 APR 2024 to 16 MAY 2024



NOTE: Chart not to scale

ARRIVAL ROUTE DESCRIPTION

- CHEVE TRANSITION (CHEVE.EESAT4)
- JROAM TRANSITION (JROAM.EESAT4)
- NAVYS TRANSITION (NAVYS.EESAT4)
- PNUITS TRANSITION (PNUITS.EESAT4)
- PUDJE TRANSITION (PUDJE.EESAT4)

LANDING ALL AIRPORTS: From YEAGR on track 305° to EESAT, then on track 305° to KEFDE, then on track 312°. Expect RADAR vectors to final approach course.

NOTE: For use when DAL is in north flow.
When DAL is in south flow, file and expect the LOADS RNAV STAR.

NOTE: NAVYS Transition: For KCLL Departures only.

EESAT FOUR ARRIVAL (RNAV)

DALLAS, TEXAS

SC-2, 18 APR 2024 to 16 MAY 2024