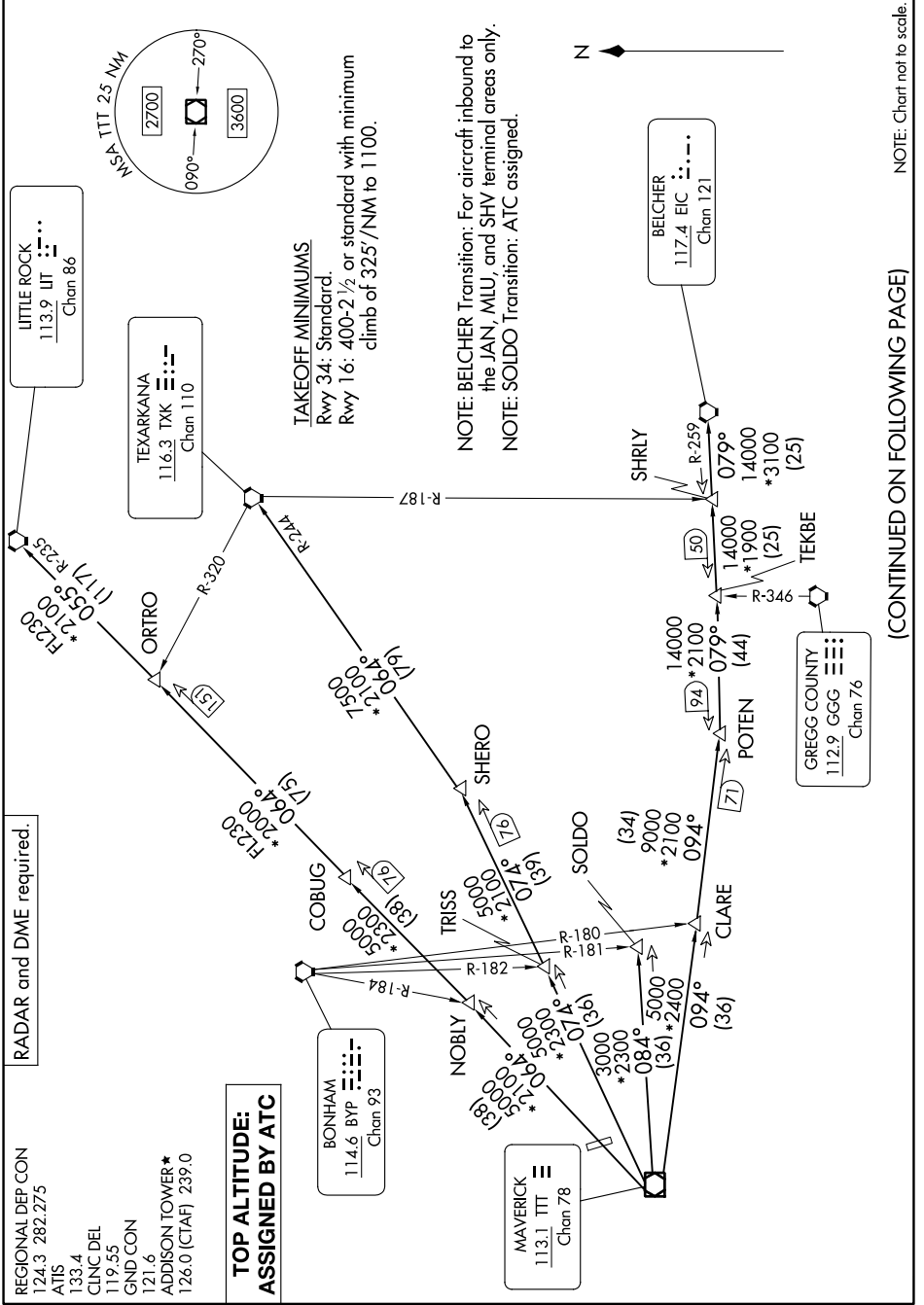


DALLAS THREE DEPARTURE

DALLAS, TEXAS

SC-2, 11 JUL 2024 to 08 AUG 2024



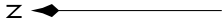
RADAR and DME required.

REGIONAL DEP CON
124.3 282.275
ATIS
133.4
CLNC DEL
119.55
GND CON
121.6
ADDISON TOWER*
126.0 (CTAF) 239.0

**TOP ALTITUDE:
ASSIGNED BY ATC**

TAKEOFF MINIMUMS
Rwy 34: Standard.
Rwy 16: 400-2½ or standard with minimum
climb of 325'/NM to 1100.

NOTE: BELCHER Transition: For aircraft inbound to the JAN, MIU, and SHV terminal areas only.
NOTE: SOLDO Transition: ATC assigned.



(CONTINUED ON FOLLOWING PAGE)

NOTE: Chart not to scale.

SC-2, 11 JUL 2024 to 08 AUG 2024

DALLAS THREE DEPARTURE

DALLAS, TEXAS