

VORTAC OGG <b>115.1</b> Chan <b>98</b>	APP CRS <b>194°</b>	Rwy Idg TDZE Apt Elev	<b>6995</b> <b>25</b> <b>53</b>
--	------------------------	-----------------------------	---------------------------------------

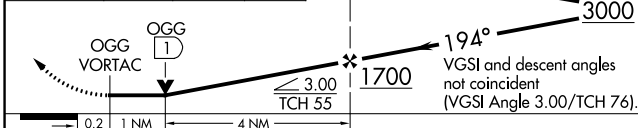
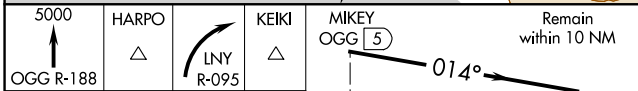
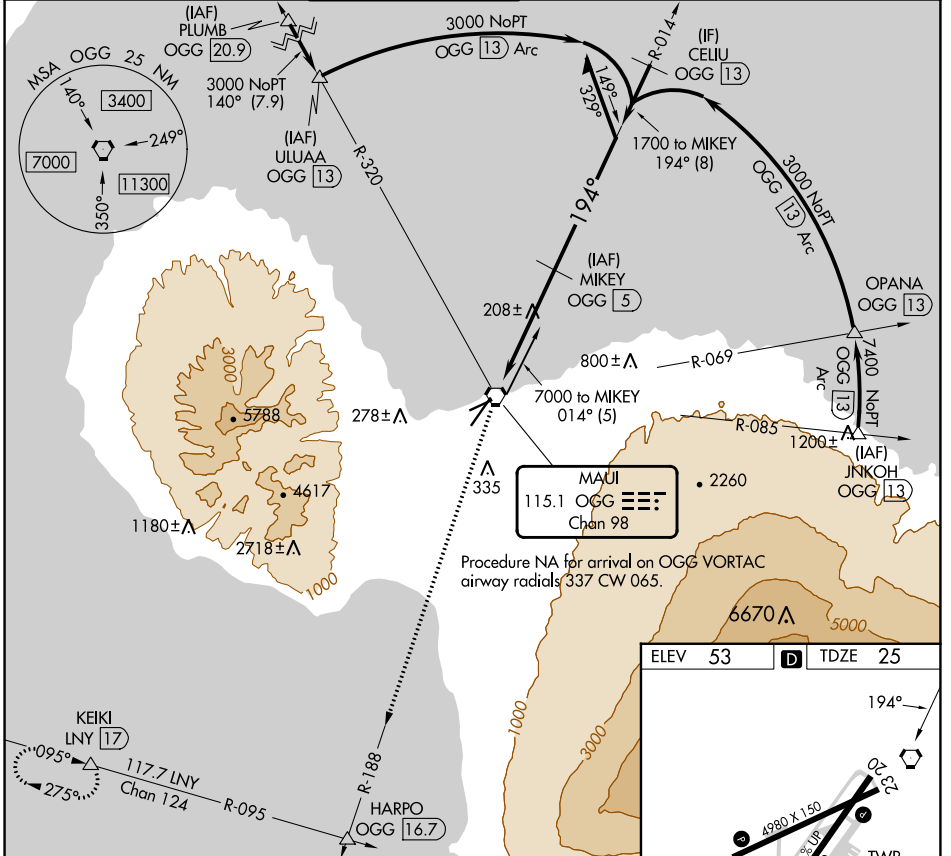
# VOR Z or TACAN RWY 20

KAHALUI (OGG)(PHOG)

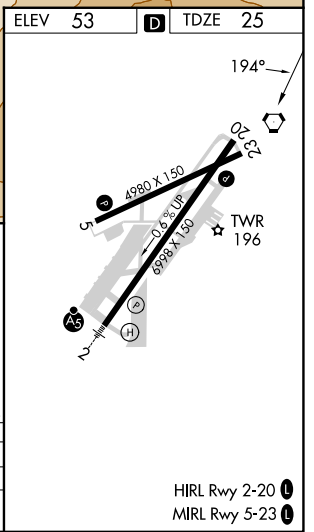
DME required.

MISSED APPROACH: Climb to 5000 on OGG R-188 to HARPO INT/OGG 16.7 DME then right turn on LNY R-095 to KEIKI 17 DME and hold.

ATIS <b>128.6</b>	HCF APPROACH <b>120.2 322.4 (NORTH)</b> <b>119.5 225.4 (SOUTH)</b>	MAUI TOWER ★ <b>118.7 (CTAF) 0 279.6</b>	GND CON <b>121.9 279.6</b>	CLNC DEL <b>120.6 290.5</b>	UNICOM <b>122.95</b>
----------------------	--	---	-------------------------------	--------------------------------	-------------------------



CATEGORY	A	B	C	D
S-20	460-1	435 (500-1)	460-1¼	435 (500-1¼)
CIRCLING	500-1 447 (500-1)	620-1 567 (600-1)	740-2 687 (700-2)	1140-3 1087 (1100-3)



PAC, 05 SEP 2024 to 31 OCT 2024

PAC, 05 SEP 2024 to 31 OCT 2024