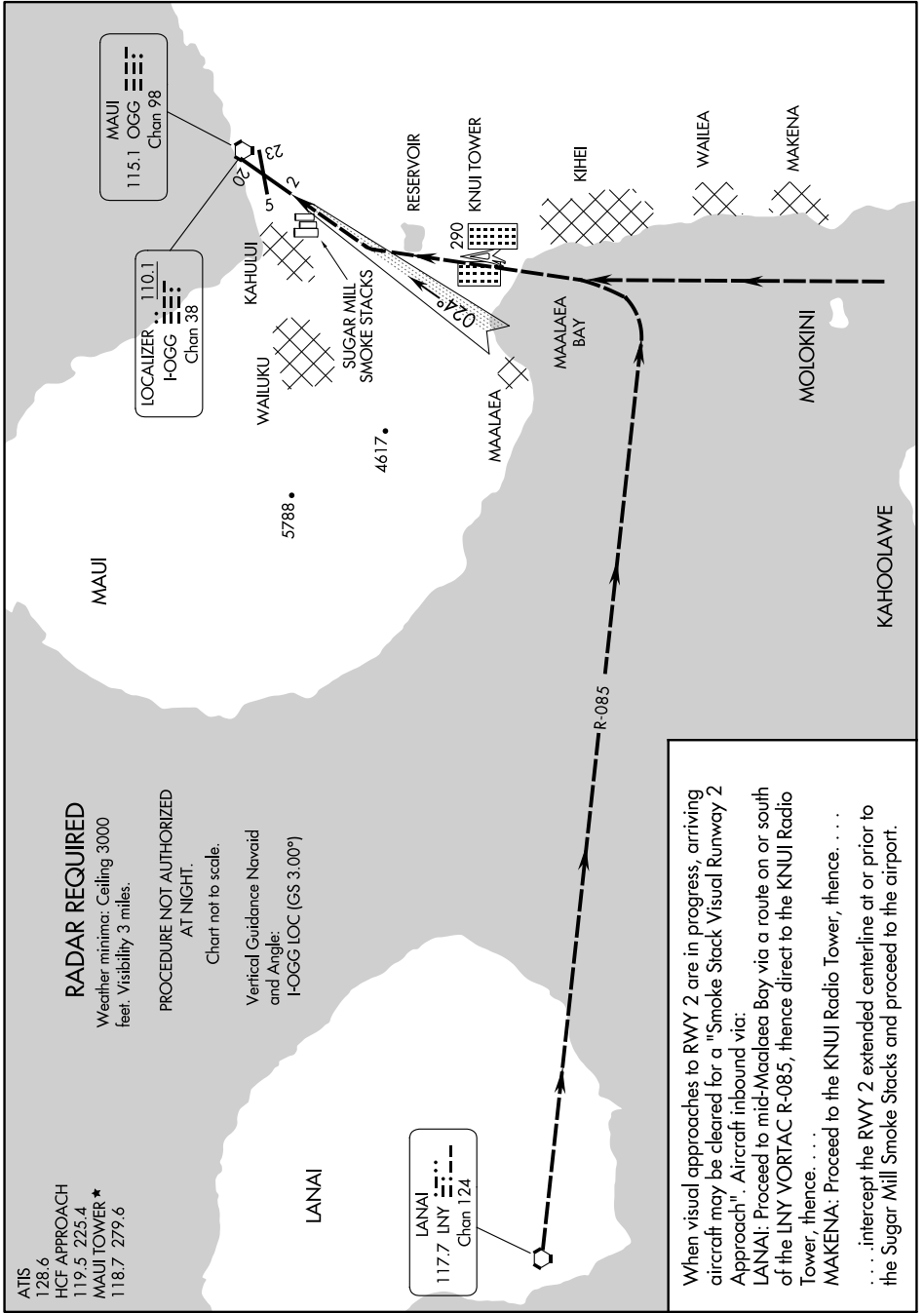


# SMOKE STACK VISUAL RWY 2

PAC: 05 SEP 2024 to 31 OCT 2024



ATIS  
128.6  
HCF APPROACH  
119.5 225.4  
MAUI TOWER ★  
118.7 279.6

## RADAR REQUIRED

Weather minima: Ceiling 3000  
feet. Visibility 3 miles.

PROCEDURE NOT AUTHORIZED  
AT NIGHT.

Chart not to scale.

Vertical Guidance Navaid  
and Angle:  
I-OGG LOC (GS 3.00°)

LANAI  
117.7 LNY  
Chan 124

When visual approaches to RWY 2 are in progress, arriving aircraft may be cleared for a "Smoke Stack Visual Runway 2 Approach". Aircraft inbound via:  
LANAI: Proceed to mid-Maalaea Bay via a route on or south of the LNY VORTAC R-085, thence direct to the KNUJ Radio Tower, thence. . . .  
MAKENA: Proceed to the KNUJ Radio Tower, thence. . . .  
. . . . intercept the RWY 2 extended centerline at or prior to the Sugar Mill Smoke Stacks and proceed to the airport.

PAC: 05 SEP 2024 to 31 OCT 2024

# SMOKE STACK VISUAL RWY 2

20° 54'N-156° 26'W

KAHULUI, HAWAII  
KAHULUI (OGG)(PHOG)