

APP CRS	Rwy Idg	<b>6995</b>
<b>024°</b>	TDZE	<b>55</b>
	Apt Elev	<b>55</b>

# RNAV (RNP) Z RWY 2

KAHULUI (OGG)(PHOG)

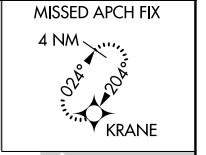
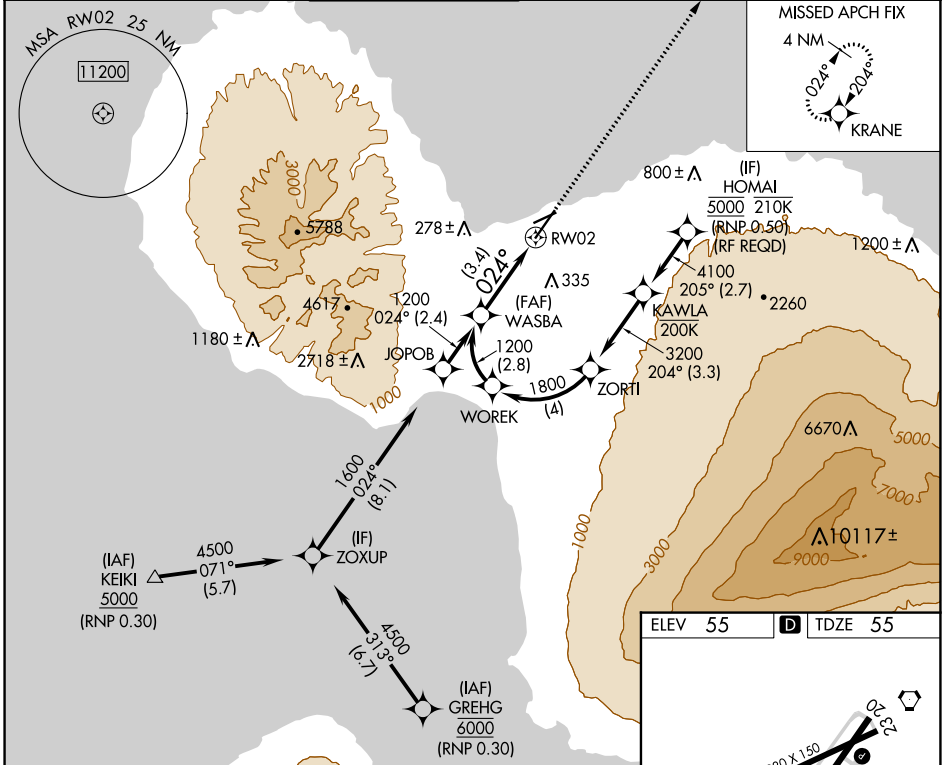
RNP AR APCH - GPS.

▼ For uncompensated Baro-VNAV systems, procedure NA below 14°C or above 54° C. When local altimeter setting not received, procedure NA. For inop ALS, increase RNP 0.30 all Cats visibility to 7/8 SM.

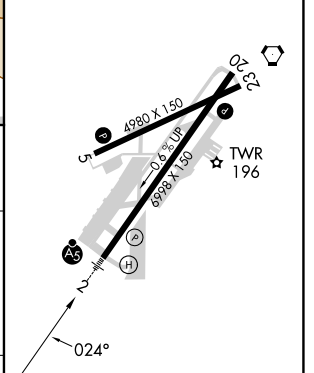
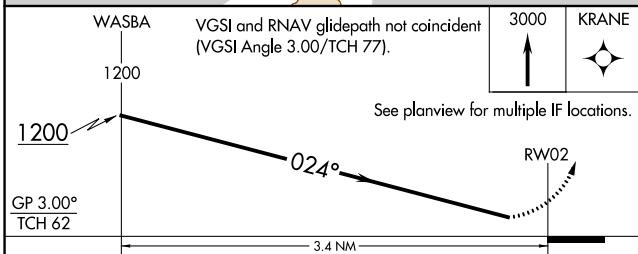
MALSR 

MISSED APPROACH: Climb to 3000 direct KRANE and hold.

ATIS	HCF APPROACH	MAUI TOWER ★	GND CON	CLNC DEL	UNICOM
<b>128.6</b>	<b>120.2 322.4</b> (NORTH) <b>119.5 225.4</b> (SOUTH)	<b>118.7</b> (CTAF) <b>0 279.6</b>	<b>121.9 279.6</b>	<b>120.6 290.5</b>	<b>122.95</b>



ELEV 55	D TDZE 55
---------	-----------



CATEGORY	A	B	C	D
RNP 0.30 DA		394-1/2	339 (400-1/2)	

**AUTHORIZATION REQUIRED**

HIRL Rwy 2-20 

MIRL Rwy 5-23 

PAC, 05 SEP 2024 to 31 OCT 2024

PAC, 05 SEP 2024 to 31 OCT 2024