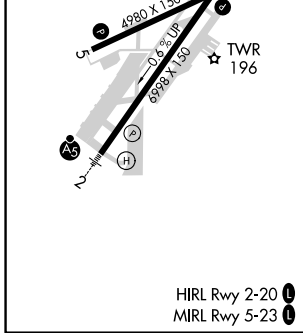
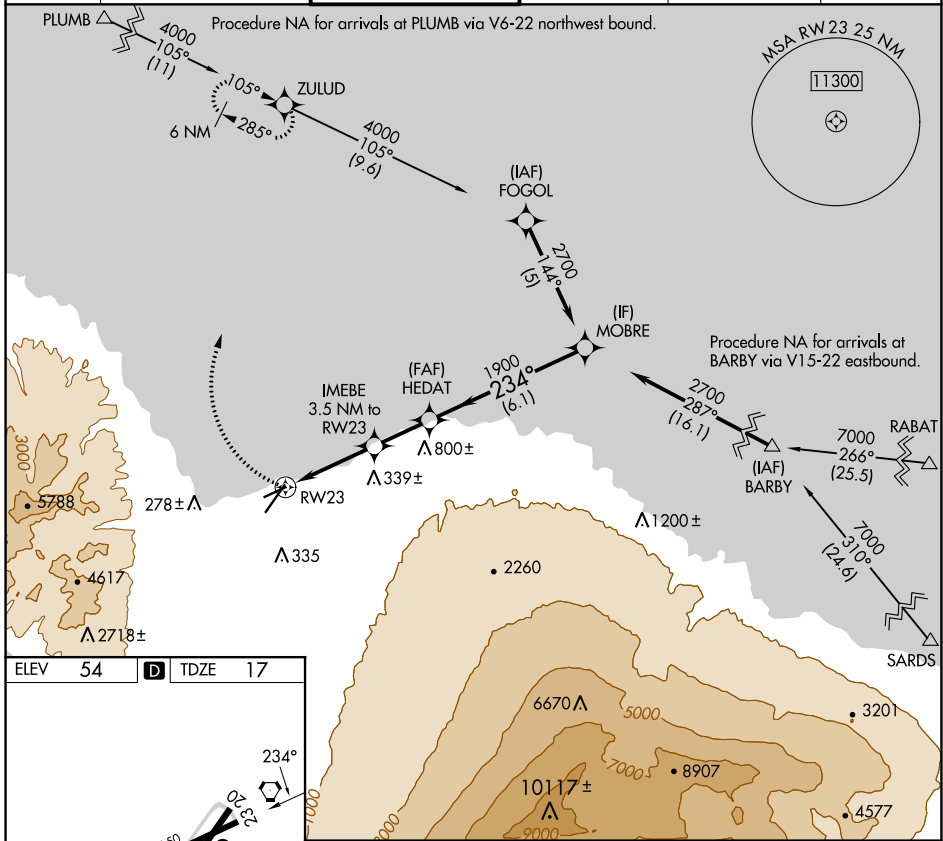


APP CRS 234°	Rwy Idg 4980
	TDZE 17
	Apt Elev 54

RNAV (GPS) RWY 23

KAHALUI (OGG)(PHOG)

▽	DME/DME RNP-0.3 NA.		MISSED APPROACH: Climbing right turn to 4000 direct ZULUD and hold, continue climb-in-hold to 4000.		
ATIS 128.6	HCF APPROACH 120.2 322.4 (NORTH) 119.5 225.4 (SOUTH)	MAUI TOWER ★ 118.7 (CTAF) 0 279.6	GND CON 121.9 279.6	CLNC DEL 120.6 290.5	UNICOM 122.95



	4000	ZULUD	HEDAT	MOBRE	
		IMEBE 3.5 NM to RW23	1900	2700	Procedure Turn NA
		RW23	1200		
		3.5 NM	2.2 NM	6.1 NM	
CATEGORY	A	B	C	D	
LNAV MDA	460-1	443 (500-1)	460-1¼ 443 (500-1¼)	460-1½ 443 (500-1½)	
CIRCLING	500-1 446 (500-1)	620-1 566 (600-1)	780-2 726 (800-2)	1180-3 1126 (1200-3)	

PAC: 05 SEP 2024 to 31 OCT 2024

PAC: 05 SEP 2024 to 31 OCT 2024