
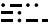
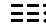
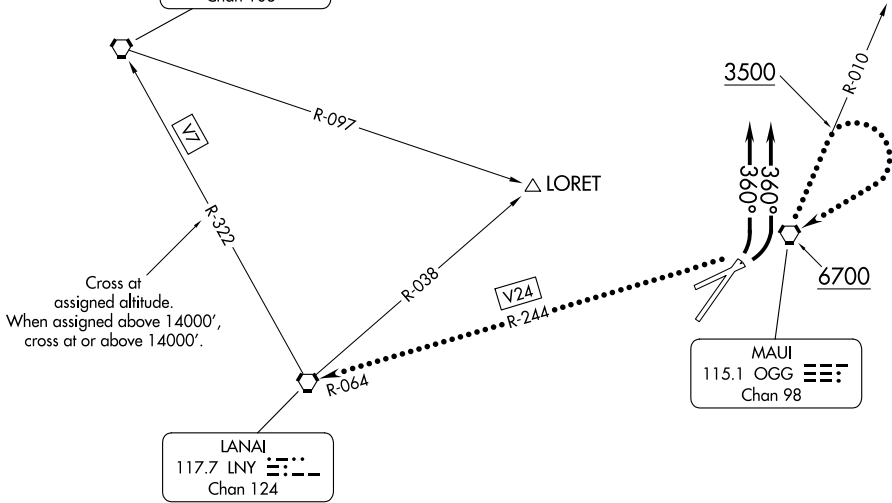


HCF APPROACH
120.2 322.4
ATIS
128.6
CLNC DEL
120.6 290.5
GND CON
121.9 279.6
MAUI TOWER★
118.7 (CTAF) 279.6

MOLOKAI
116.1 MKK 
Chan 108

LANAI
117.7 LNY 
Chan 124

MAUI
115.1 OGG 
Chan 98



NOTE: Takeoff requires minimum climb of 420' per NM until reaching 8000'.

NOTE: Chart not to scale.

PAC: 05 SEP 2024 to 31 OCT 2024

PAC: 05 SEP 2024 to 31 OCT 2024



DEPARTURE ROUTE DESCRIPTION

TAKEOFF RUNWAYS 2 AND 5 ONLY: After takeoff, all aircraft fly heading 360°, expect radar vectors west of Maui Island to assigned fix/route. Cross the LNY R-322 at assigned altitude. When assigned above 14000', cross at or above 14000'.

LOST COMMUNICATIONS: If not in contact with Departure Control 1 minute after crossing the shoreline, climb northbound via the OGG R-010 until reaching at least 3500'. Then reverse course to the right direct OGG VORTAC. Then via V24 to LNY VORTAC. Cross OGG VORTAC at or above 6700'.