

LOC/DME I-OGG <b>110.1</b> Chan 38	APP CRS <b>024°</b>	Rwy Idg TDZE Apt Elev	<b>6995</b> <b>55</b> <b>55</b>
--	------------------------	-----------------------------	---------------------------------------

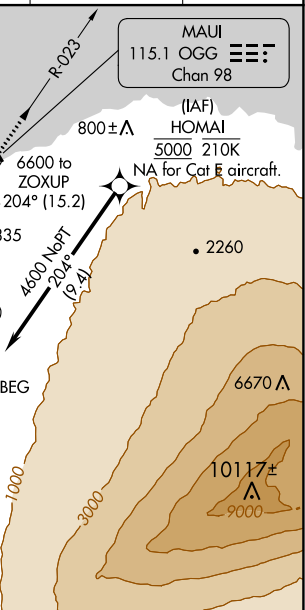
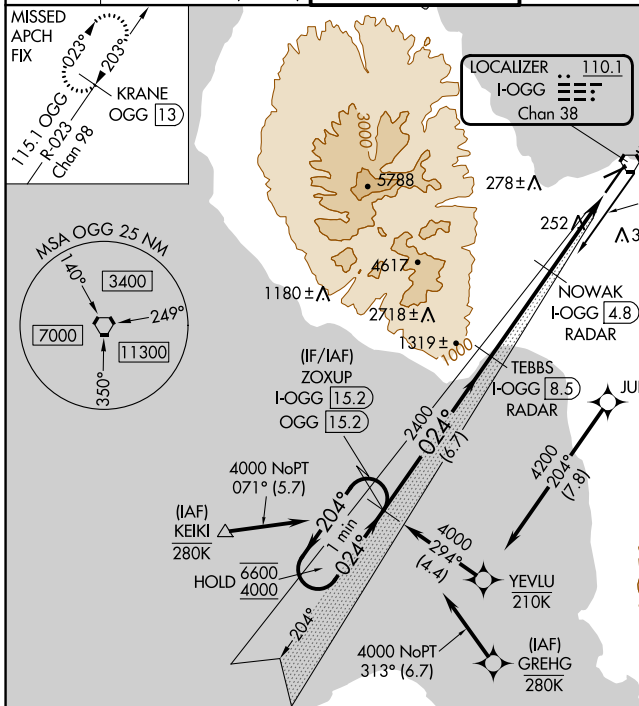
# ILS Z or LOC Z RWY 2

KAHULUI (OGG)(PHOG)

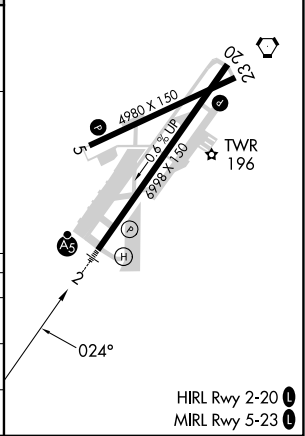
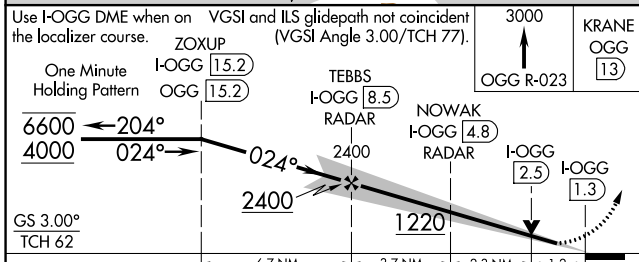
RNP APCH-GPS. From HOMAL or KEIKI or GREHG.  
DME required.  
For inop ALS, increase S-ILS 2 Cat E visibility to ¾ SM, and S-LOC 2 Cats C/D/E visibility to 1¾ SM.

MALS R  
MISSED APPROACH: Climb to 3000 on OGG VORTAC R-023 to KRANE/OGG 13 DME and hold.

ATIS <b>128.6</b>	HCF APPROACH <b>120.2 322.4</b> (NORTH) <b>119.5 225.4</b> (SOUTH)	MAUI TOWER ★ <b>118.7</b> (CTAF) <b>0 279.6</b>	GND CON <b>121.9 279.6</b>	CLNC DEL <b>120.6 290.5</b>	UNICOM <b>122.95</b>
----------------------	--	--	-------------------------------	--------------------------------	-------------------------



ELEV 55	TDZE 55
---------	---------



CATEGORY	A	B	C	D	E
S-ILS 2	275-½ 220 (300-½)				
S-LOC 2	520-½	465 (500-½)	520-1	465 (500-1)	
CIRCLING	520-1 465 (500-1)	620-1 565 (600-1)	740-2 685 (700-2)	1140-3 1085 (1100-3)	1720-3 1665 (1700-3)

PAC, 05 SEP 2024 to 31 OCT 2024

PAC, 05 SEP 2024 to 31 OCT 2024