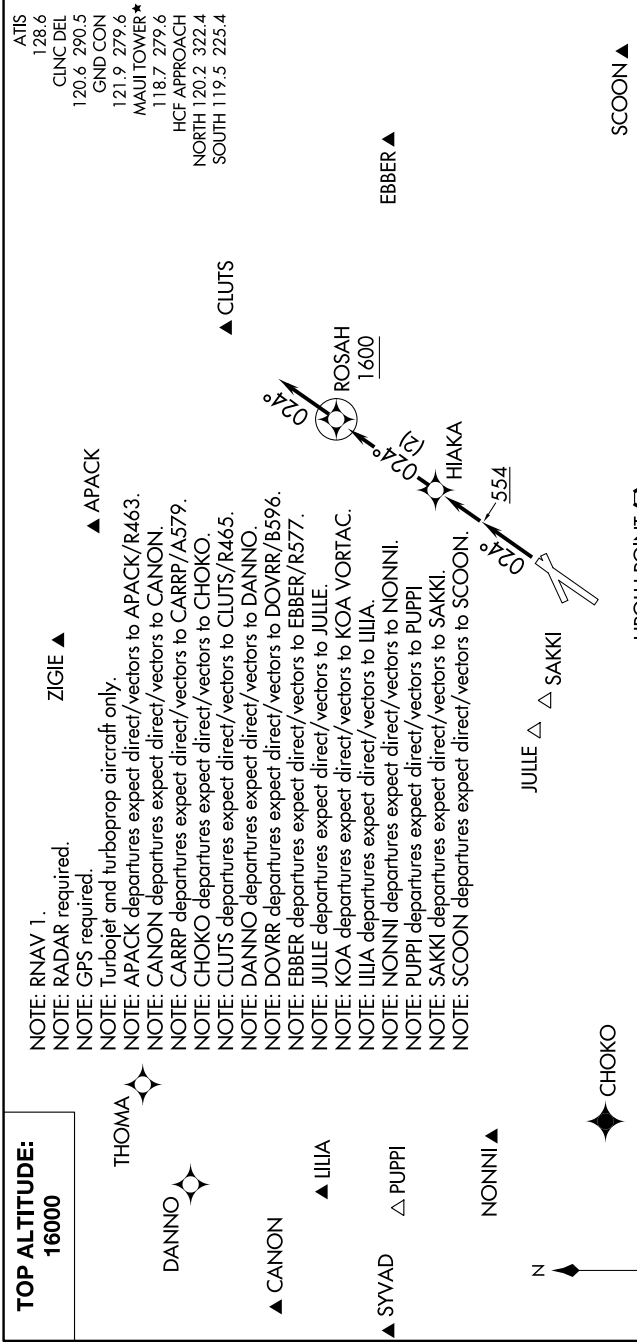


HIAKA ONE DEPARTURE (RNAV)

AL-762 (FAA)

PAC: 05 SEP 2024 to 31 OCT 2024



DEPARTURE ROUTE DESCRIPTION

TAKEOFF RUNWAY 2: Climb heading 024° to 554, then direct HIAKA, thence. . . .
 . . . on track 024° to cross ROSAH at or above 1600, then on track 024° for RADAR vectors to assigned route/fix, maintain 16000 or as assigned by ATC. Expect clearance to filed altitude/flight level within 10 minutes after departure.

DEPARTURE ROUTE DESCRIPTION

TAKEOFF MINIMUMS
 Rwy 2: Standard with minimum climb of 500' per NM to 554.
 Rwys 5, 20, 23: NA - ATC.
 NOTE: Chart not to scale.

UPOLO POINT UPP

KONA KOA

TARDE

DOVRR

CARRP

CHOKO

NONNI

JULIE △ **SAKKI**

CLUTS

APACK

THOMA

DANNO

CANON

SYVAD △ **PUPPI**

LIILIA

EBBER

SCOON

HIAKA ONE DEPARTURE (RNAV)

PAC: 05 SEP 2024 to 31 OCT 2024