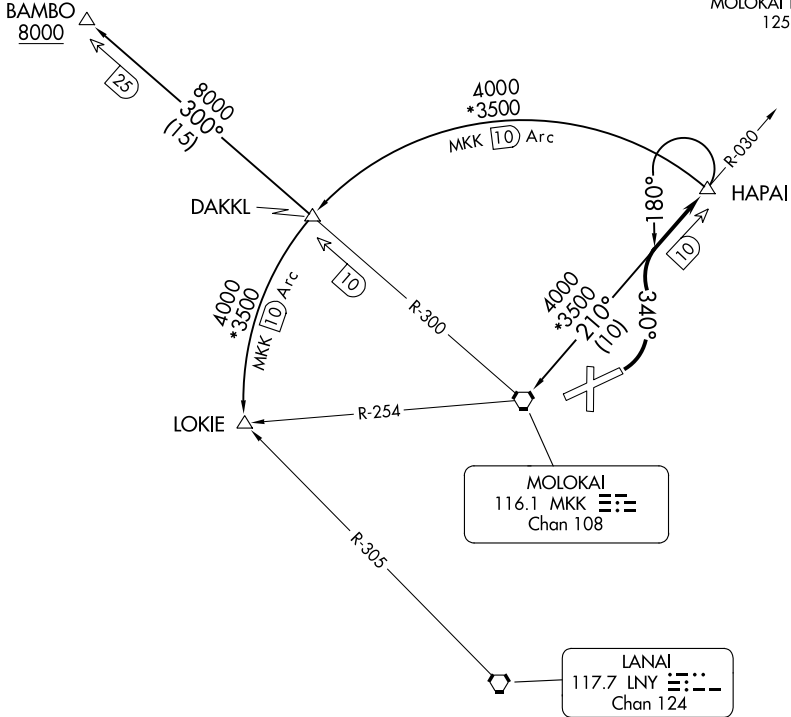


HCF CENTER
124.1 317.5
ATIS
128.2
GND CON
121.9
MOLOKAI TOWER*
125.7 306.2



PAC, 31 OCT 2024 to 26 DEC 2024

PAC, 31 OCT 2024 to 26 DEC 2024

TAKEOFF MINIMUMS

Rwys 17, 23, 35: NA-ATC.

Rwy 5: 300-1 with minimum climb of 325' per NM to 1500 or standard with minimum climb of 540' per NM to 800.

NOTE: DME required.

NOTE: Chart not to scale



DEPARTURE ROUTE DESCRIPTION

TAKEOFF RUNWAY 5: Climbing left turn heading 340° and MKK VORTAC R-030 to HAPAI/MKK 10 DME, thence. . . .

. . . .on assigned transition.

BAMBO TRANSITION (HAPAI3.BAMBO): From over HAPAI/MKK 10 DME on MKK VORTAC 10 DME Arc CCW to DAKKL/MKK 10 DME, then on MKK R-300 to BAMBO/MKK 25 DME.

LOKIE TRANSITION (HAPAI3.LOKIE): From over HAPAI/MKK 10 DME on MKK VORTAC 10 DME Arc CCW to LOKIE INT/MKK 10 DME.

MOLOKAI TRANSITION (HAPAI3.MKK): From over HAPAI/MKK 10 DME, left turn heading 180° and MKK R-030 to MKK VORTAC.