

(SYMIN.SYMIN1) 20030

# SYMIN ONE ARRIVAL (RNAV)

AL-754 (FAA)

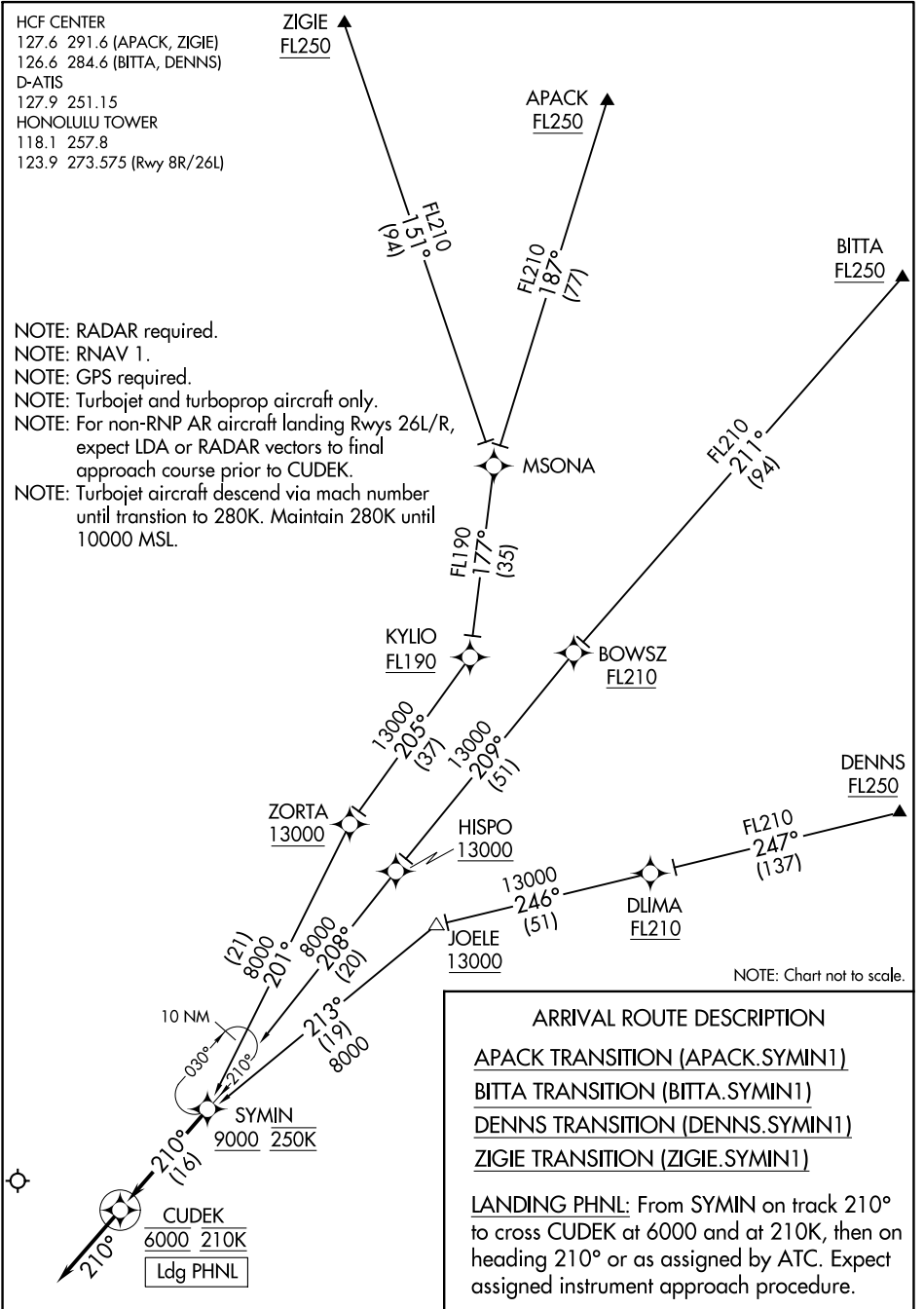
DANIEL K INOUYE INTL (HNL) (PHNL)  
HONOLULU, HAWAII

HCF CENTER  
127.6 291.6 (APACK, ZIGIE)  
126.6 284.6 (BITTA, DENNS)  
D-ATIS  
127.9 251.15  
HONOLULU TOWER  
118.1 257.8  
123.9 273.575 (Rwy 8R/26L)

- NOTE: RADAR required.
- NOTE: RNAV 1.
- NOTE: GPS required.
- NOTE: Turbojet and turboprop aircraft only.
- NOTE: For non-RNP AR aircraft landing Rwy 26L/R, expect LDA or RADAR vectors to final approach course prior to CUDEK.
- NOTE: Turbojet aircraft descend via mach number until transtion to 280K. Maintain 280K until 10000 MSL.

PAC, 05 SEP 2024 to 31 OCT 2024

PAC, 05 SEP 2024 to 31 OCT 2024



NOTE: Chart not to scale.

### ARRIVAL ROUTE DESCRIPTION

APACK TRANSITION (APACK.SYMIN1)

BITTA TRANSITION (BITTA.SYMIN1)

DENNS TRANSITION (DENNS.SYMIN1)

ZIGIE TRANSITION (ZIGIE.SYMIN1)

LANDING PHNL: From SYMIN on track 210° to cross CUDEK at 6000 and at 210K, then on heading 210° or as assigned by ATC. Expect assigned instrument approach procedure.

# SYMIN ONE ARRIVAL (RNAV)

(SYMIN.SYMIN1) 30JAN20

HONOLULU, HAWAII  
DANIEL K INOUYE INTL (HNL) (PHNL)