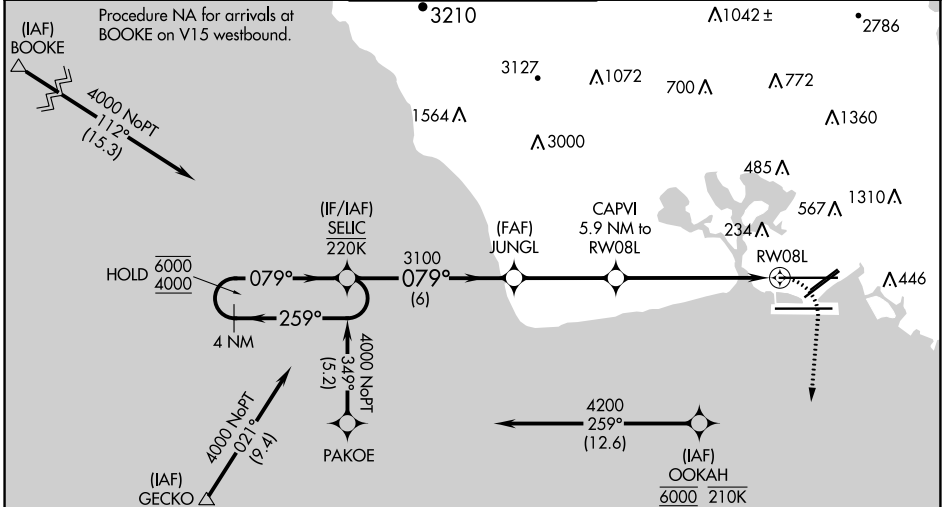


APP CRS	Rwy Idg	12312
079°	TDZE	13
	Apt Elev	13

RNAV (GPS) Y RWY 8L

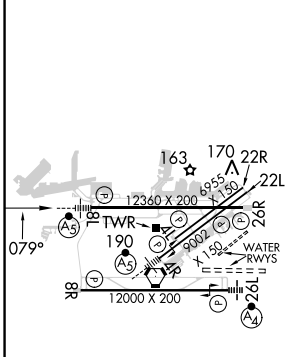
DANIEL K INOUEY INTL (HNL) (PHNL)

RNP APCH - GPS.		HONOLULU TOWER		GND CON	CLNC DEL
<p>⚠ Circling Rwy 22R NA at night. For inop ALS, increase Cats C, D, and E visibility to 1 3/8 SM. Circling NA to sea lanes 4W, 8W, 22W, and 26W. Circling NA for Cats A and B northwest of Rwy 8L-22R. Circling NA for Cats C and D north of Rwy 8L-26R. OOKAH transition Rwy for Cat E aircraft. Cat E restricted to USAF/USN aircraft</p>		<p>118.1 257.8 123.9 273.575 (Rwy 8R/26L)</p>		121.9 348.6	121.4 281.4
D-ATIS	HCF APPROACH				
127.9 251.15	118.3 269.0				



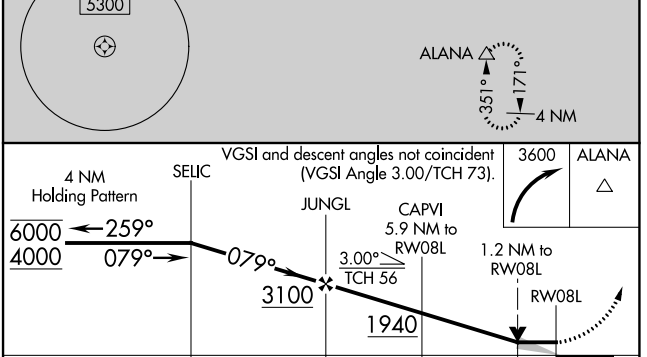
Procedure NA for arrivals at GECKO on V16 westbound and V4 southwest bound.

ELEV 13	D	TDZE 13
---------	----------	---------



WATER RWYS
8W-26W 5090 X 300
4W-22W 3000 X 150

MIRL Rwy 4L-22R
REIL Rwys 4L, 8R, 22L, 22R, and 26R
HIRL Rwys 4R-22L, 8L-26R, and 8R-26L



CATEGORY	A	B	C	D	E
LNNAV MDA	480-1/2	467 (500-1/2)	480-1	467 (500-1)	
C CIRCLING	680-1	667 (700-1)	820-2 1/4 807 (900-2 1/4)	1280-3 1267 (1300-3)	NA

PAC: 05 SEP 2024 to 31 OCT 2024

PAC: 05 SEP 2024 to 31 OCT 2024