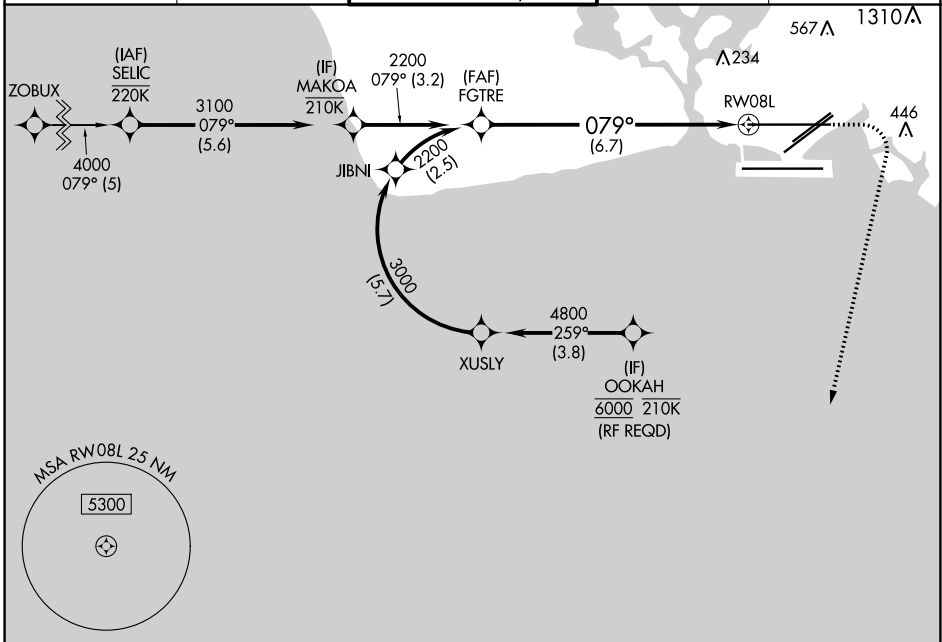


APP CRS	Rwy Idg	12312
079°	TDZE	13
	Apt Elev	13

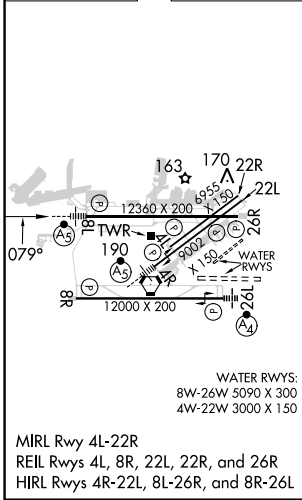
RNAV (RNP) Z RWY 8L

DANIEL K INOUE INTL (HNL) (PHNL)

RNP AR APCH - GPS.		MALSR	MISSED APPROACH: Climb to 420 then climbing right turn to 3000 direct ALANA and hold.	
<p>▼ For uncompensated Baro-VNAV systems, procedure NA below 17°C or above 54°C. For inop ALS, increase RNP 0.15 DA all Cats visibility to ½ SM.</p>				
D-ATIS	HCF APPROACH	HONOLULU TOWER	GND CON	CLNC DEL
127.9 251.15	118.3 269.0	118.1 257.8 123.9 273.575 (Rwy 8R/26L)	121.9 348.6	121.4 281.4



ELEV 13	D	TDZE 13
---------	----------	---------



<p>ALANA Δ</p> <p>3.51°</p> <p>171°</p> <p>420</p> <p>3000</p> <p>ALANA</p> <p>4 NM</p>				
<p>MAKOA</p> <p>VGSI and RNAV glidepath not coincident (VGSI Angle 3.00/TCH 73).</p> <p>FGTR</p> <p>3100</p> <p>079°</p> <p>2200</p> <p>See planview for multiple IF locations.</p> <p>RW08L</p> <p>GP 3.00°</p> <p>TCH 56</p> <p>3.2 NM</p> <p>6.7 NM</p>				
CATEGORY	A	B	C	D
RNP 0.15 DA		285-½	272 (300-½)	
RNP 0.30 DA		347-½	334 (400-½)	

AUTHORIZATION REQUIRED