

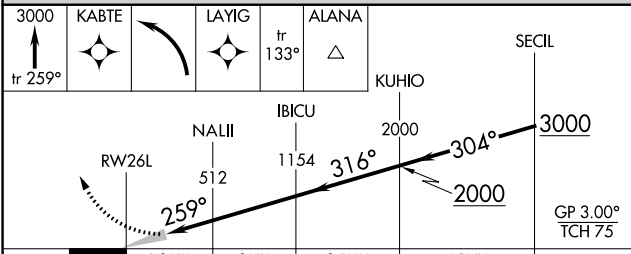
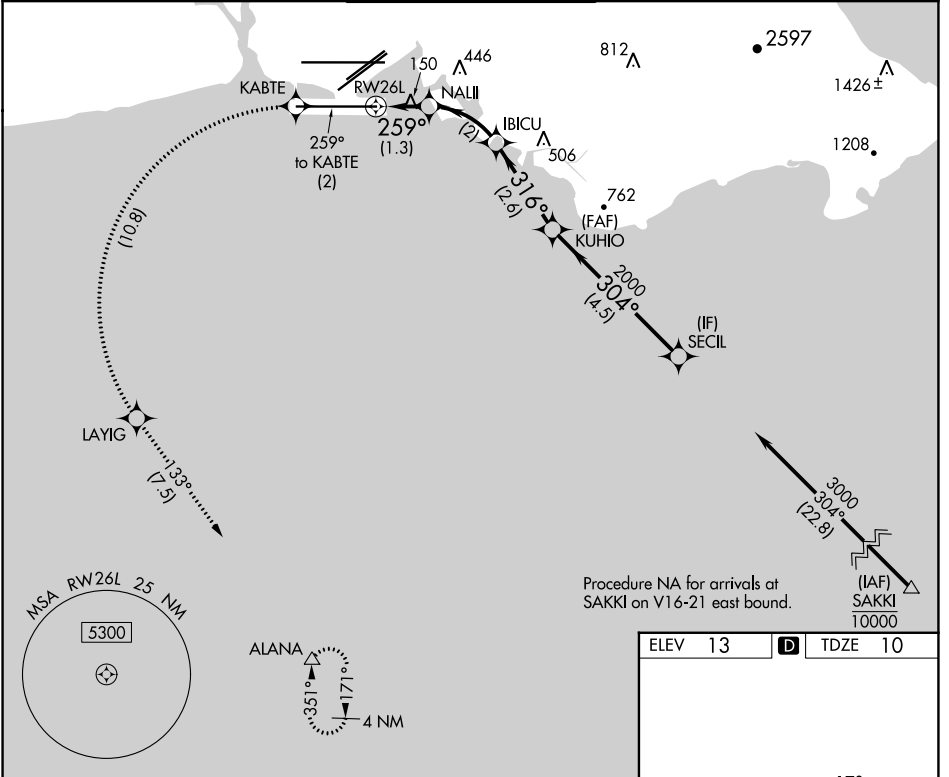
APP CRS	Rwy Idg	12000
259°	TDZE	10
	Apt Elev	13

RNAV (RNP) RWY 26L

DANIEL K INOUYE INTL (HNL) (PHNL)

RNP AR APCH, RF required.		MALSF	MISSED APPROACH: Climb to 3000 on track 259° to KABTE, left turn to LAYIG, then track 133° to ALANA and hold. Missed approach requires minimum climb of 234 feet per NM to 300.
For uncompensated Baro-VNAV systems, procedure NA below 15°C (58°F) or above 53°C (128°F).			

D-ATIS	HCF APPROACH	HONOLULU TOWER	GND CON	CLNC DEL
127.9 251.15	118.3 269.0	118.1 257.8 123.9 273.575 (Rwy 8R/26L)	121.9 348.6	121.4 281.4



ELEV	13	D	TDZE	10
------	-----------	----------	------	-----------

WATER RWYS:
8W-26W 5090 X 300
4W-22W 3000 X 150

MIRL Rwy 4L-22R
REIL Rwys 4L, 8R, 22L, 22R, and 26R
HIRL Rwys 4R-22L, 8L-26R, and 8R-26L

CATEGORY	A	B	C	D
RNP 0.15 DA	260-¾		250 (300-¾)	

AUTHORIZATION REQUIRED

PAC, 11 JUL 2024 to 05 SEP 2024

PAC, 11 JUL 2024 to 05 SEP 2024