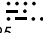


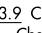
# PALAY THREE DEPARTURE

NOTE: Departures from Runways 4L/R and 8L/R must complete right turn to assigned heading within 2 NM of runway departure end. Cross CKH R-240 at or above 2500.

NOTE: Departures Runways 26L/R must complete left turn to assign heading within 2 NM of runway departure end (HNL 3 DME).

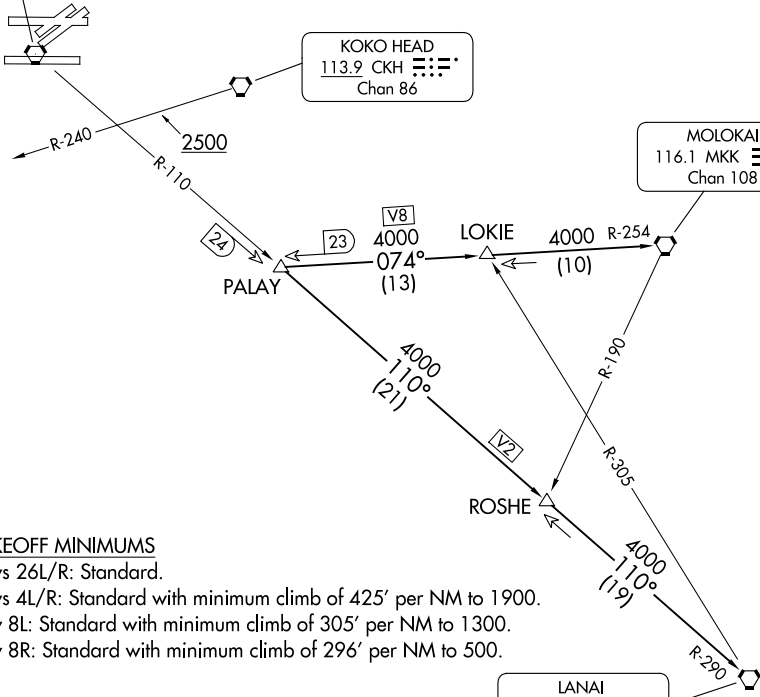
HCF APPROACH  
124.8 317.6  
D-ATIS  
127.9 251.15  
CLNC DEL  
121.4 281.4  
GND CON  
121.9 348.6  
HONOLULU TOWER  
118.1 257.8  
123.9 273.575 (Rwy 8R/26L)

HONOLULU  
114.8 HNL   
Chan 95

KOKO HEAD  
113.9 CKH   
Chan 86

MOLOKAI  
116.1 MKK   
Chan 108

LANAI  
117.7 LNY   
Chan 124



### TAKEOFF MINIMUMS

Rwys 26L/R: Standard.  
Rwys 4L/R: Standard with minimum climb of 425' per NM to 1900.  
Rwy 8L: Standard with minimum climb of 305' per NM to 1300.  
Rwy 8R: Standard with minimum climb of 296' per NM to 500.

NOTE: Chart not to scale.



### DEPARTURE ROUTE DESCRIPTION

Turn right/left to heading assigned by Tower, expect vectors to PALAY, maintain 5000; then on (transition). Expect clearance to enroute altitude/flight level at LNY VORTAC.

LANAI TRANSITION (PALAY3.LNY): From over PALAY INT on HNL R-110 and LNY R-290 to LNY VORTAC.

MOLOKAI TRANSITION (PALAY3.MKK): From over PALAY INT on MKK R-254 to MKK VORTAC.