

MOLOKAI FIVE DEPARTURE

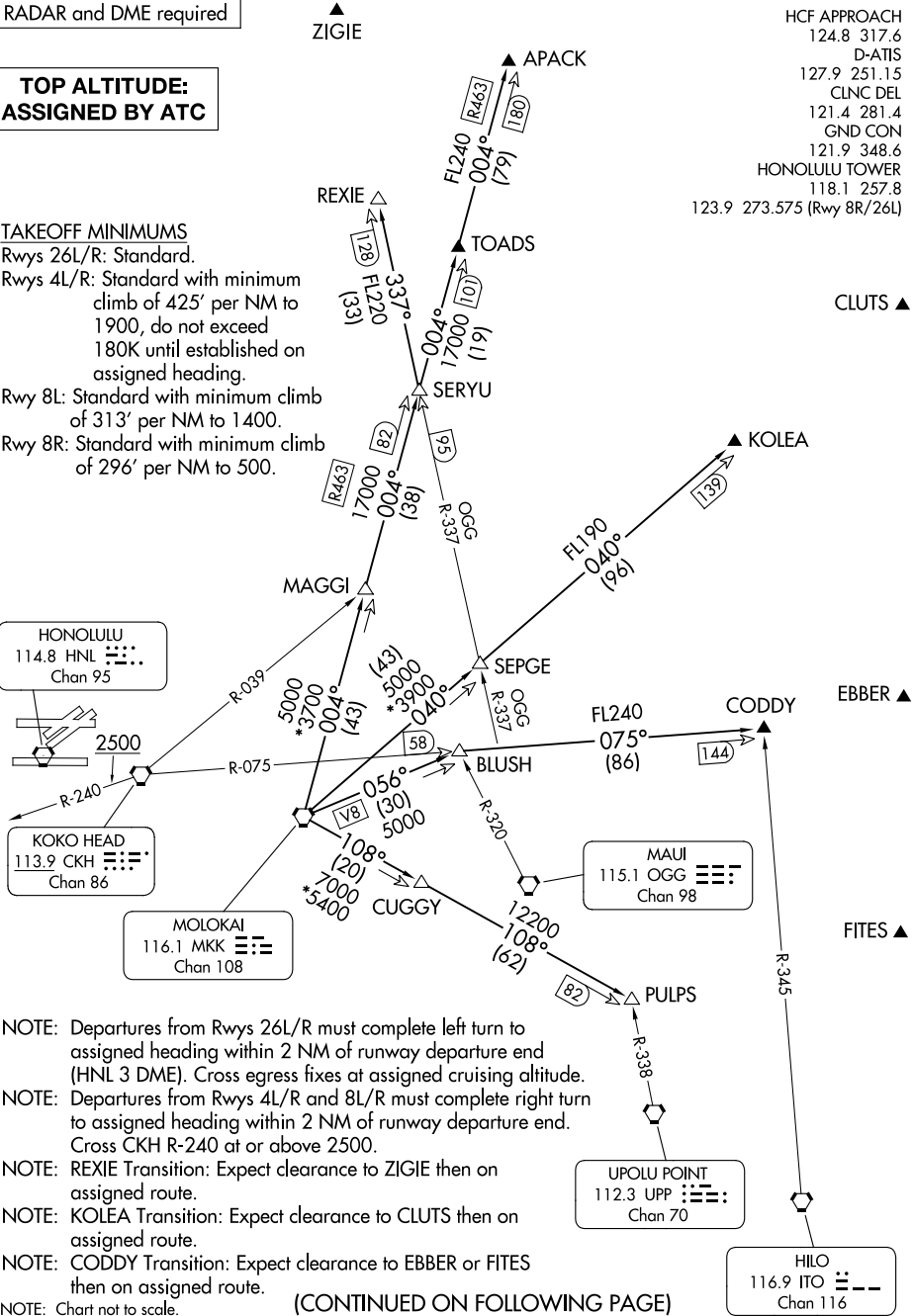
RADAR and DME required

**TOP ALTITUDE:
ASSIGNED BY ATC**

TAKEOFF MINIMUMS

Rwys 26L/R: Standard.
 Rwys 4L/R: Standard with minimum climb of 425' per NM to 1900, do not exceed 180K until established on assigned heading.
 Rwy 8L: Standard with minimum climb of 313' per NM to 1400.
 Rwy 8R: Standard with minimum climb of 296' per NM to 500.

HCF APPROACH
 124.8 317.6
 D-ATIS
 127.9 251.15
 CLNC DEL
 121.4 281.4
 GND CON
 121.9 348.6
 HONOLULU TOWER
 118.1 257.8
 123.9 273.575 (Rwy 8R/26L)



- NOTE: Departures from Rwys 26L/R must complete left turn to assigned heading within 2 NM of runway departure end (HNL 3 DME). Cross egress fixes at assigned cruising altitude.
- NOTE: Departures from Rwys 4L/R and 8L/R must complete right turn to assigned heading within 2 NM of runway departure end. Cross CKH R-240 at or above 2500.
- NOTE: REXIE Transition: Expect clearance to ZIGIE then on assigned route.
- NOTE: KOLEA Transition: Expect clearance to CLUTS then on assigned route.
- NOTE: CODDY Transition: Expect clearance to EBBER or FITES then on assigned route.
- NOTE: Chart not to scale.

(CONTINUED ON FOLLOWING PAGE)

MOLOKAI FIVE DEPARTURE

PAC, 05 SEP 2024 to 31 OCT 2024

PAC, 05 SEP 2024 to 31 OCT 2024