

LOC/DME I-HNL 111.7 Chan 54	APP CRS 079°	Rwy Idg 12312 TDZE 13 Apt Elev 13
---	------------------------	--

LOC RWY 8L

DANIEL K INOUE INTL (HNL) (PHNL)

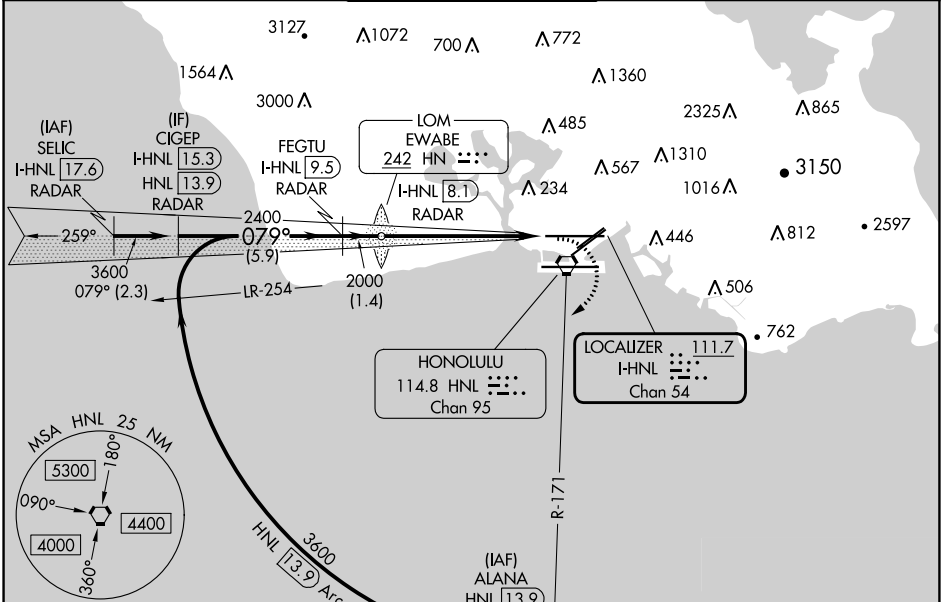
DME or RADAR required.

⚠ Circling Rwy 22R NA at night. Circling NA for Cats A and B northwest of Rwys 8L and 22R and for Cats C and D north of Rwy 8L-26R. Circling NA to sea lanes 4W, 8W, 22W and 26W. For inop ALS, increase S-LOC 8L Cats C and D visibility to 1 $\frac{3}{8}$ SM.

MALSR
AS

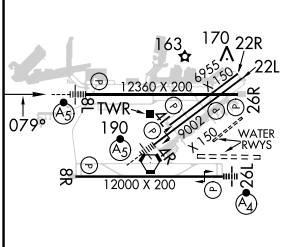
MISSED APPROACH: Climbing right turn to 5000 on heading 200° and HNL VORTAC R-171 to ALANA INT/HNL 13.9 DME and hold, continue climb-in-hold to 5000.

D-ATIS 127.9 251.15	HCF APPROACH 118.3 269.0	HONOLULU TOWER 118.1 257.8 123.9 273.575 (Rwy 8R/26L)	GND CON 121.9 348.6	CLNC DEL 121.4 281.4
-------------------------------	------------------------------------	---	-------------------------------	--------------------------------



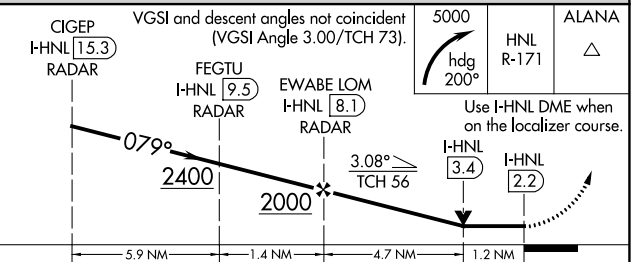
ELEV 13	D TDZE 13
----------------	-------------------------

MIRL Rwy 4L-22R
REIL Rws 4L, 8R, 22L, 22R, and 26R
HIRL Rws 4R-22L, 8L-26R, and 8R-26L



WATER RWYS:
8W-26W 5090 X 300
4W-22W 3000 X 150

Procedure NA for arrivals at ALANA on V16 eastbound.



CATEGORY	A	B	C	D
S-8L	480- $\frac{1}{2}$	467 (500- $\frac{1}{2}$)	480-1	467 (500-1)
C CIRCLING	680-1	667 (700-1)	820-2 $\frac{1}{4}$ 807 (900-2 $\frac{1}{4}$)	1280-3 1267 (1300-3)

PAC: 05 SEP 2024 to 31 OCT 2024

PAC: 05 SEP 2024 to 31 OCT 2024