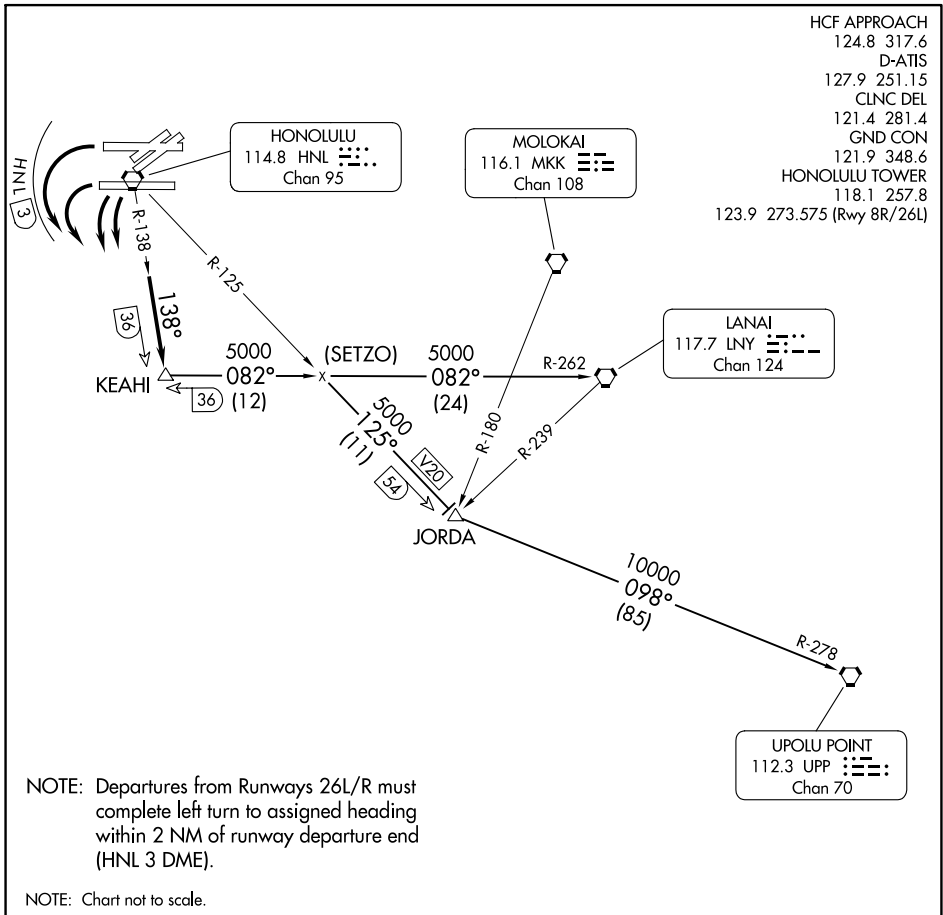


# KEAHI THREE DEPARTURE



PAC, 05 SEP 2024 to 31 OCT 2024

PAC, 05 SEP 2024 to 31 OCT 2024

## DEPARTURE ROUTE DESCRIPTION

**TAKEOFF RUNWAYS 22/26 ONLY:** Turn left to heading assigned by tower, expect RADAR vectors to intercept HNL R-138; then via HNL R-138 to KEAHI INT, maintain 5000'; then via (transition). Expect clearance to enroute altitude/flight level at JORDA INT or LNY VORTAC.

**JORDA TRANSITION (KEAH13.JORDA):** From over KEAHI INT via LNY R-262 and HNL R-125 to JORDA INT.

**LANAI TRANSITION (KEAH13.LNY):** From over KEAHI INT via LNY R-262 to LNY VORTAC.

**UPOLU TRANSITION (KEAH13.UPP):** From over KEAHI INT via LNY R-262 and HNL R-125 to JORDA INT, thence via UPP R-278 to UPP VORTAC.

# KEAHI THREE DEPARTURE