

LOC/DME I-HUM 110.5 Chan 42	APP CRS 042°	Rwy Idg 8950 TDZE 8 Apt Elev 13
---	------------------------	--

ILS Z RWY 4R

DANIEL K INOUEY INTL (HNL) (PHNL)

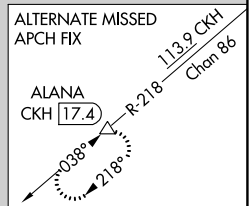
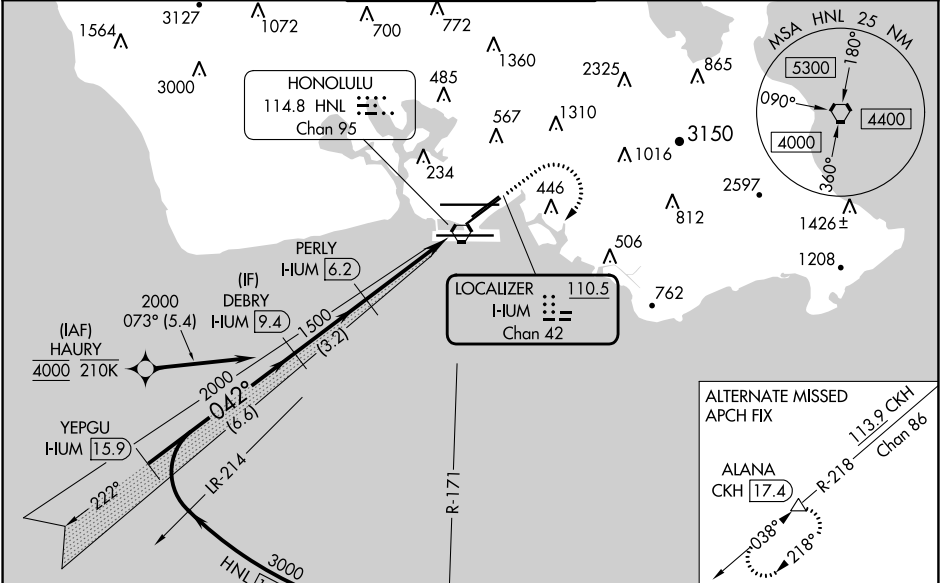
From HAURY: RNAV 1-GPS required. DME or RADAR required.
DME or RADAR required for procedure entry.



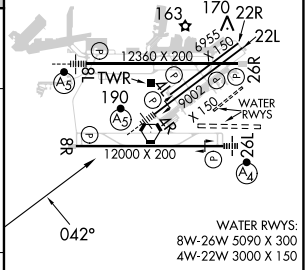
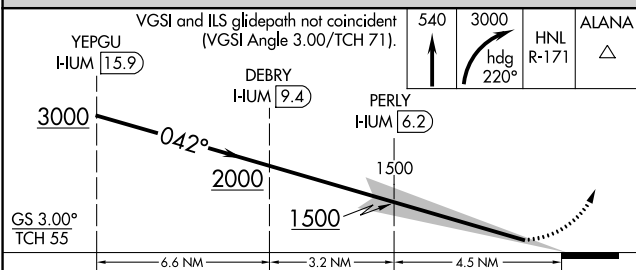
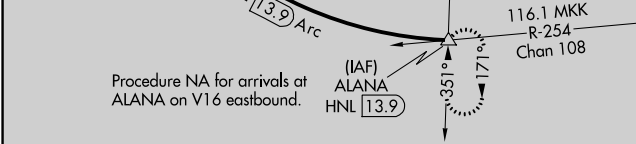
MISSED APPROACH: Climb to 540, Cat E climb to 780 then climbing right turn to 3000 on heading 220° and on HNL VORTAC R-171 to ALANA INT/HNL VORTAC 13.9 DME and hold. * Missed approach requires minimum climb of 318 feet per NM to 1820, (if unable to meet climb gradient use S-ILS 4R minimums).

HAURY transition NA for Cat E aircraft. For inop ALS, increase S-ILS 4R Cats A-D visibility to ½ SM, increase S-ILS 4R Cat E visibility to 1½ SM.

D-ATIS 127.9 251.15	HCF APPROACH 118.3 269.0	HONOLULU TOWER 118.1 257.8 123.9 273.575 (Rwy 8R/26L)	GND CON 121.9 348.6	CLNC DEL 121.4 281.4
-------------------------------	------------------------------------	---	-------------------------------	--------------------------------



ELEV 13	D	TDZE 8
---------	---	--------



CATEGORY	A	B	C	D	E
S-ILS 4R*		258-½	250 (300-½)		NA
S-ILS 4R		308-½	299 (300-½)		566-1⅞ 557 (600-1½)

MIRL Rwy 4L-22R
REIL Rwy 4L, 8R, 22L, 22R, and 26R
HIRL Rwy 4R-22L, 8L-26R, and 8R-26L