

LOC/DME I-HUM 110.5 Chan 42	APP CRS 042°	Rwy Idg 8950 TDZE 8 Apt Elev 13
-------------------------------------------------	------------------------	------------------------------------------------------------


ILS Y RWY 4R

DANIEL K INOUEY INTL (HNL) (PHNL)

DME required. From HUBAP: RNAV 1-GPS required. DME or RADAR required for procedure entry.

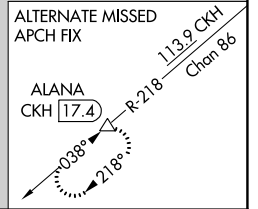
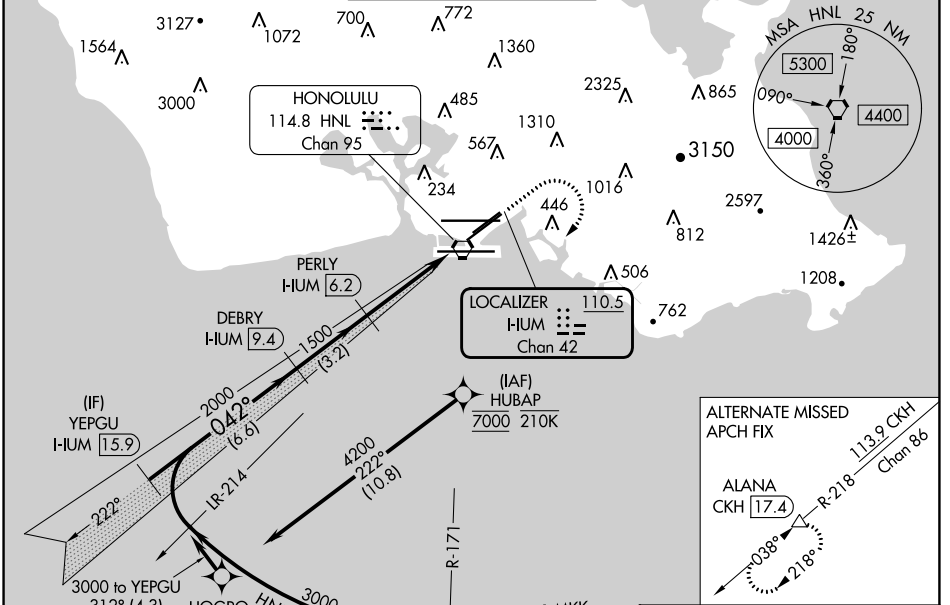
For inop ALS, increase S-ILS 4R all Cats visibility to 7/8 SM.

MALSRS



MISSED APPROACH: Climb to 540 then climbing right turn to 3000 on heading 220° and on HNL VORTAC R-171 to ALANA INT/HNL 13.9 DME and hold. *Missed approach requires minimum climb of 318 feet per NM to 1820. (If unable to meet climb gradient use S-ILS 4R minimums).

D-ATIS 127.9 251.15	HCF APPROACH 118.3 269.0	HONOLULU TOWER 118.1 257.8 123.9 273.575 (Rwy 8R/26L)	GND CON 121.9 348.6	CLNC DEL 121.4 281.4
-------------------------------	------------------------------------	---------------------------------------------------------------------------	-------------------------------	--------------------------------



ELEV 13	D TDZE 8
---------	-----------------

Procedure NA for arrivals at ALANA on V16 eastbound.

(IF) YEPGU I-HUM 15.9

DEBRY I-HUM 9.4

PERLY I-HUM 6.2

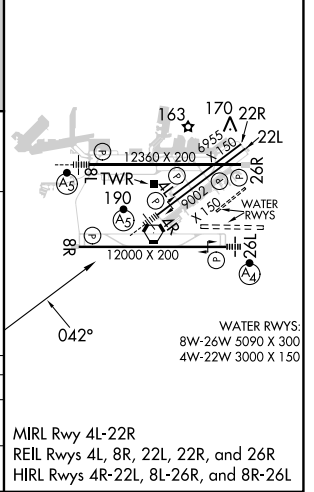
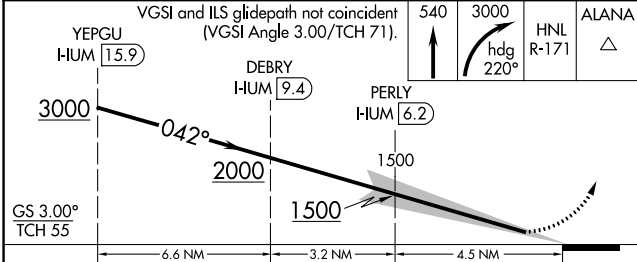
HONOLULU 114.8 HNL Chan 95

LOCALIZER I-HUM 110.5 Chan 42

(IAF) HUBAP 7000 210K

(IAF) ALANA HNL 13.9

116.1 MKK R-254 Chan 108



CATEGORY	A	B	C	D
S-ILS 4R*		258-1/2	250 (300-1/2)	
S-ILS 4R		308-1/2	299 (300-1/2)	

MIRL Rwy 4L-22R
REIL Rwsy 4L, 8R, 22L, 22R, and 26R
HIRL Rwsy 4R-22L, 8L-26R, and 8R-26L

PAC. 05 SEP 2024 to 31 OCT 2024

PAC. 05 SEP 2024 to 31 OCT 2024