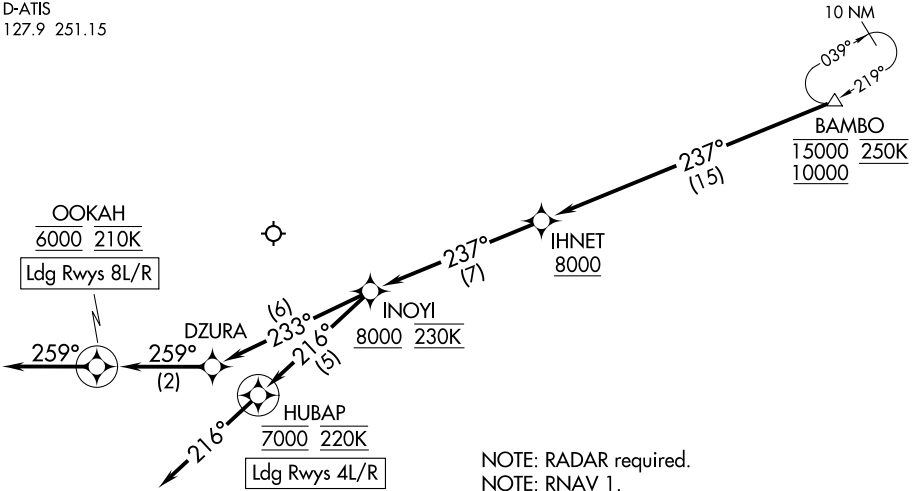


INOYI ONE ARRIVAL (RNAV) Arrival Routes

HCF CENTER
127.6 291.6 (APACK, ZIGIE)
126.6 284.6 (BITTA, DENNS)
HONOLULU TOWER
118.1 257.8
123.9 273.575 (Rwy 8R/26L)
D-ATIS
127.9 251.15



- NOTE: RADAR required.
- NOTE: RNAV 1.
- NOTE: GPS required.
- NOTE: Turbojet and turboprop aircraft only.
- NOTE: Turbojet aircraft descend via mach number until transition to 280K. Maintain 280K until slowed by the STAR.

NOTE: Chart not to scale.

ARRIVAL ROUTE DESCRIPTION

From BAMBO on track 237° to cross IHNET at or above 8000, then on track 237° to cross INOYI at or above 8000 and at 230K.

LANDING RUNWAY 4L: From INOYI on track 216° to cross HUBAP at 7000 and at 220K, then on track 216°. Expect RADAR vectors to final approach course or visual approach.

LANDING RUNWAY 4R: From INOYI on track 216° to cross HUBAP at 7000 and at 220K, then on track 216°. Expect RNAV RNP/ILS/GPS approach or RADAR vectors to final approach course.

LANDING RUNWAY 8L: From INOYI on track 233° to DZURA, then on track 259° to cross OOKAH at 6000 and at 210K, then on heading 259°. Expect RNAV RNP/ILS/GPS approach or RADAR vectors to final approach course.

LANDING RUNWAY 8R: From INOYI on track 233° to DZURA, then on track 259° to cross OOKAH at 6000 and at 210K, then on heading 259°. Expect RADAR vectors to final approach course or visual approach.